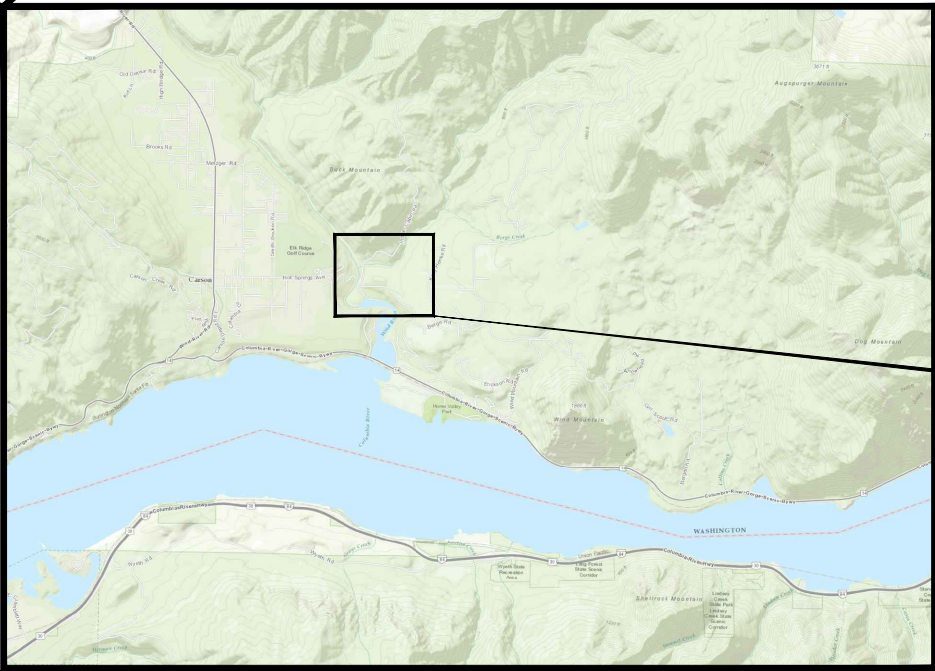


Lower Columbia Fish Recovery Board Little Wind River, Phase 4 Enhancement Project Preliminary Design

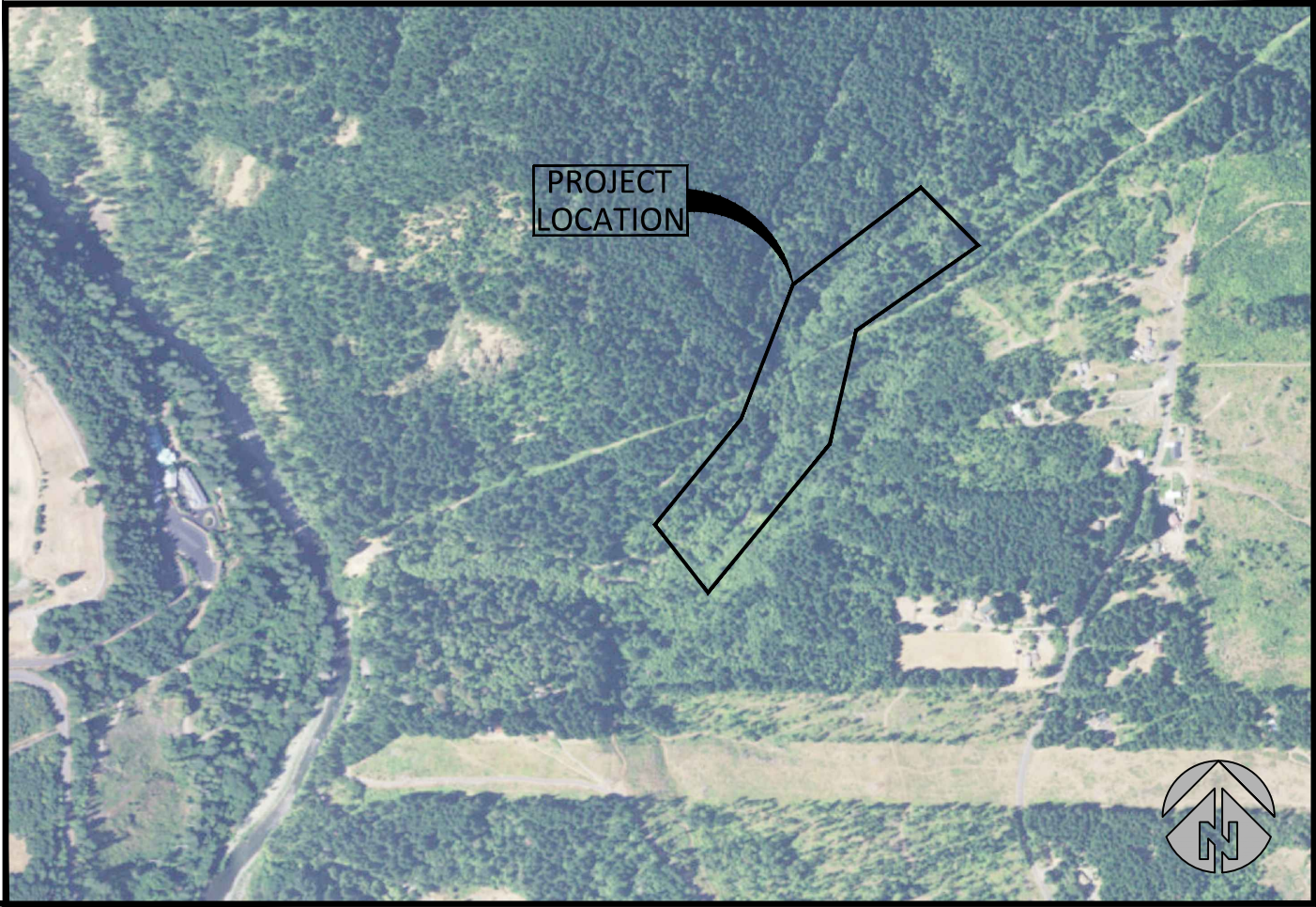
November 23, 2016



**LOCATION MAP
STATE OF WASHINGTON**



**VICINITY MAP
NOT TO SCALE**



**PROJECT
LOCATION**

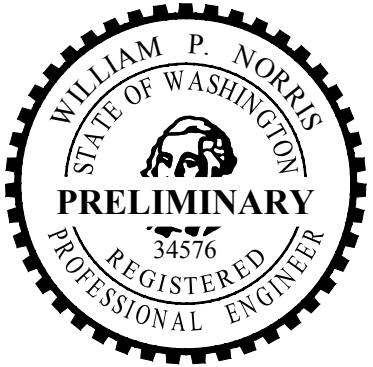
**SITE MAP
NOT TO SCALE**



SHEET INDEX

- 1 - COVER, LOCATION AND SHEET INDEX
- 2 - SITE MAP
- 3 - PLAN VIEW OF ACCESS, STAGING AND SHEET LAYOUTS
- 4 - PLAN VIEW PROPOSED CONDITIONS
- 5 - PLAN VIEW PROPOSED CONDITIONS
- 6 - PLAN VIEW PROPOSED CONDITIONS
- 7 - TYPICAL DETAILS

COORDINATES:
 LATITUDE: 45°43'44.35"N
 LONGITUDE: 121°47'29.60"W
 SECTION 22, TOWNSHIP 3N, RANGE 8E
 WATERBODY: Little Wind River
 TRIBUTARY OF: Wind River



| NO. | BY | DATE | REVISION DESCRIPTION |
|-----|----|------|----------------------|
| | | | |
| | | | |
| | | | |

| | | |
|--------------------|--------------------|-------------------|
| RP DRAWN | BN, GJ DESIGNED | BN, GJ CHECKED |
| BN, GJ APPROVED | 12/06/16 DATE | 150256 PROJECT |

Lower Columbia Fish Recovery Board
 Little Wind River, Phase 4 Enhancement Project
 Preliminary Design



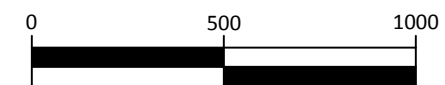
501 Portway Avenue, Suite 101
 Hood River, OR 97031
 541.386.9003
 www.interfluve.com

**COVER, LOCATION AND SHEET
 INDEX**

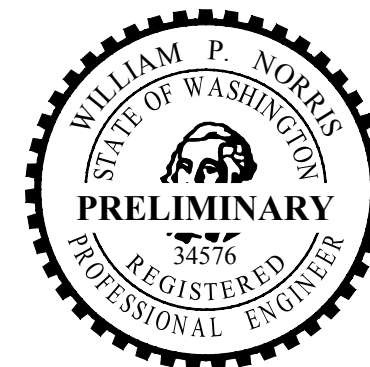


ABBREVIATIONS

- LWS LARGE WOOD STRUCTURE
- TYP TYPICAL
- N NORTH
- E EAST
- PVT PRIVATE



SCALE IN FEET



SITE MAP

| NO. | BY | DATE | REVISION DESCRIPTION |
|-----|----|------|----------------------|
| | | | |
| | | | |
| | | | |
| | | | |

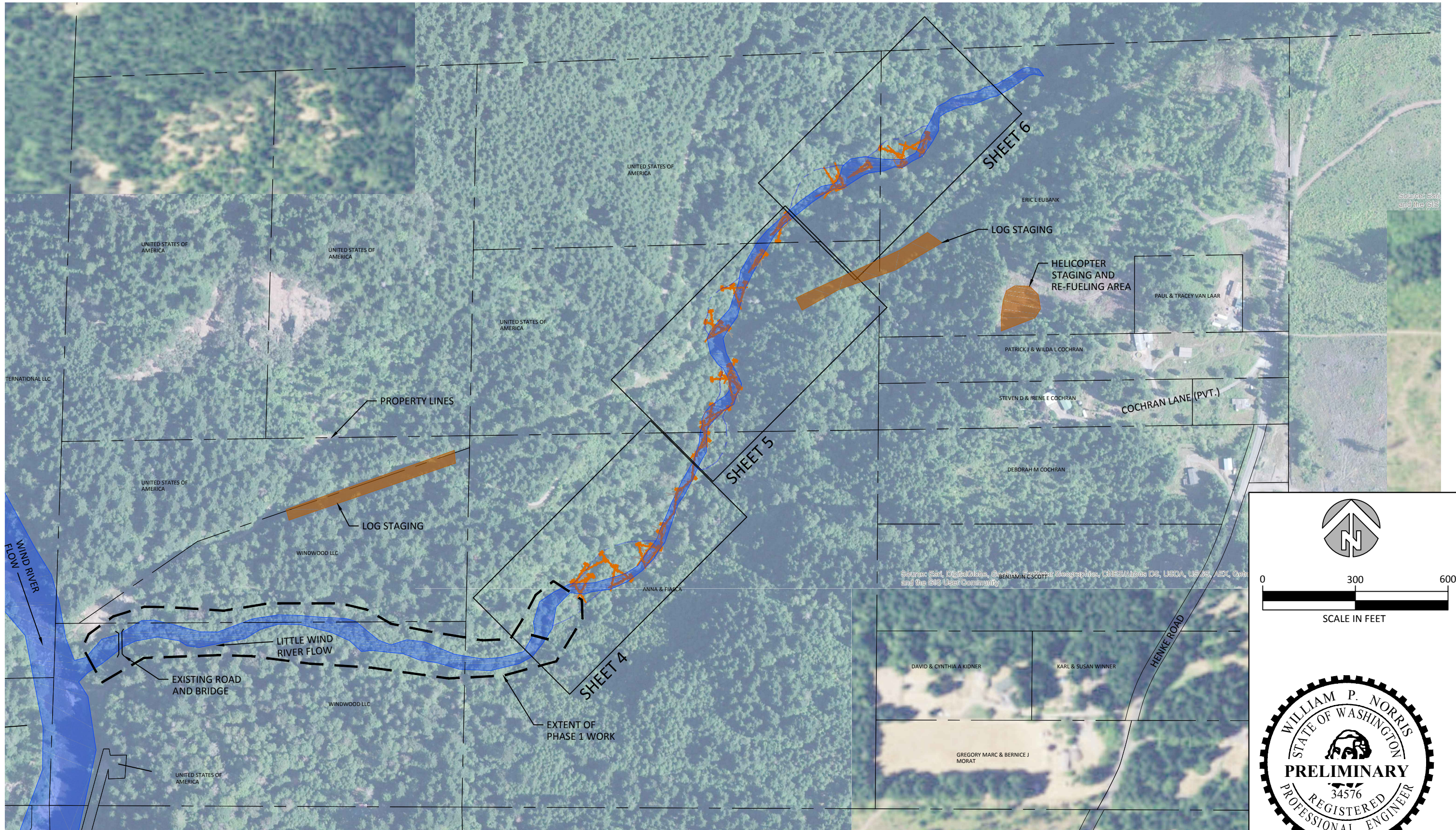
| | | |
|--------------------|--------------------|-------------------|
| RP DRAWN | BN, GJ DESIGNED | BN, GJ CHECKED |
| BN, GJ APPROVED | 12/06/16 DATE | 150256 PROJECT |

Lower Columbia Fish Recovery Board
 Little Wind River, Phase 4 Enhancement Project
 Preliminary Design

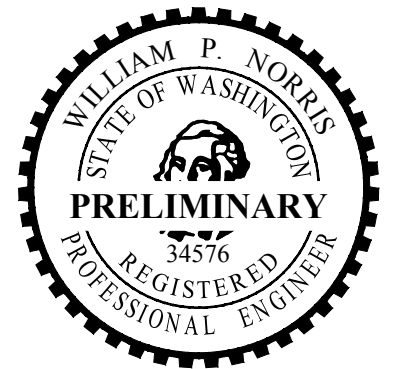


501 Portway Avenue, Suite 101
 Hood River, OR 97031
 541.386.9003
 www.interfluve.com

SITE MAP



SITE MAP



| NO. | BY | DATE | REVISION DESCRIPTION |
|-----|----|------|----------------------|
| | | | |
| | | | |
| | | | |
| | | | |

| | | |
|--------------------|--------------------|-------------------|
| RP DRAWN | BN, GJ DESIGNED | BN, GJ CHECKED |
| BN, GJ APPROVED | 12/06/16 DATE | 150256 PROJECT |

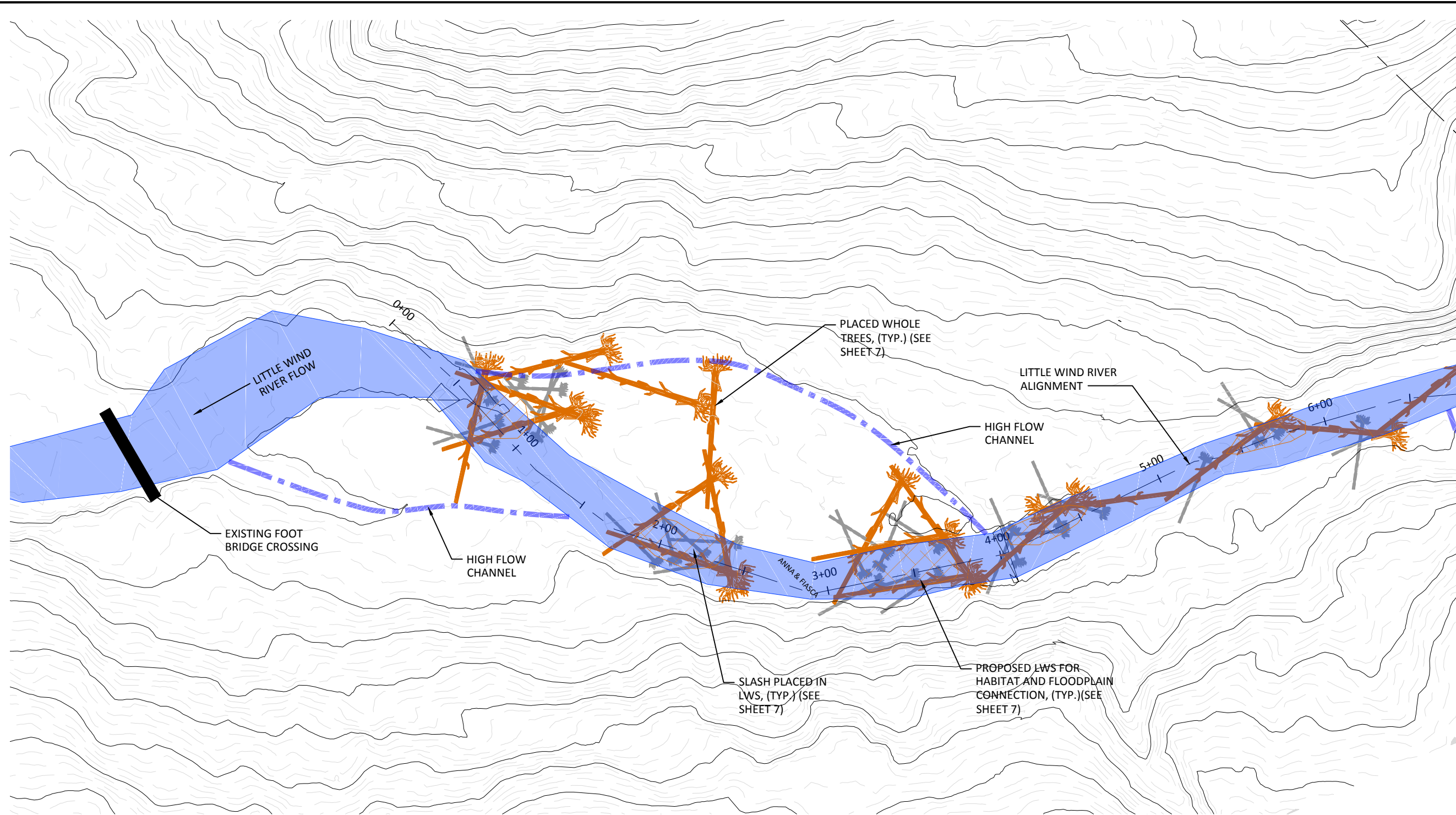
Lower Columbia Fish Recovery Board
 Little Wind River, Phase 4 Enhancement Project
 Preliminary Design



501 Portway Avenue, Suite 101
 Hood River, OR 97031
 541.386.9003
 www.interfluve.com




PLAN VIEW OF ACCESS,
 STAGING AND SHEET LAYOUTS

SHEET
 3 OF 7

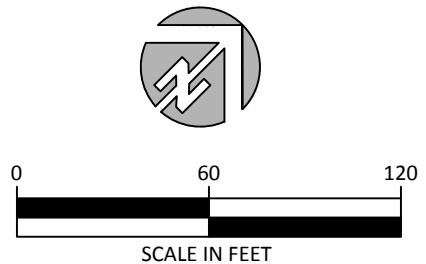


SITE MAP
NOT TO SCALE

LEGEND

-  KEY PIECE WHOLE TREE
-  RECOVERED ALDER AND FIR
-  SLASH

- NOTE:**
- RECOVERED ALDER AND FIR MAY COME FROM ON-SITE SOURCES. IF RECOVERED ON-SITE, THEY WILL BE MOVED WITH HAND CREWS. IF NOT RECOVERED ON-SITE, THEY WILL BE PLACED WITH HELICOPTER.
 - KEY PIECES TO BE PLACED OVER RECOVERED ALDER AND FIR BY HELICOPTER.
 - SLASH MAY BE PLACED BY HAND OR VIA HELICOPTER, DEPENDING ON SOURCING.



| NO. | BY | DATE | REVISION DESCRIPTION |
|-----|----|------|----------------------|
| | | | |
| | | | |
| | | | |

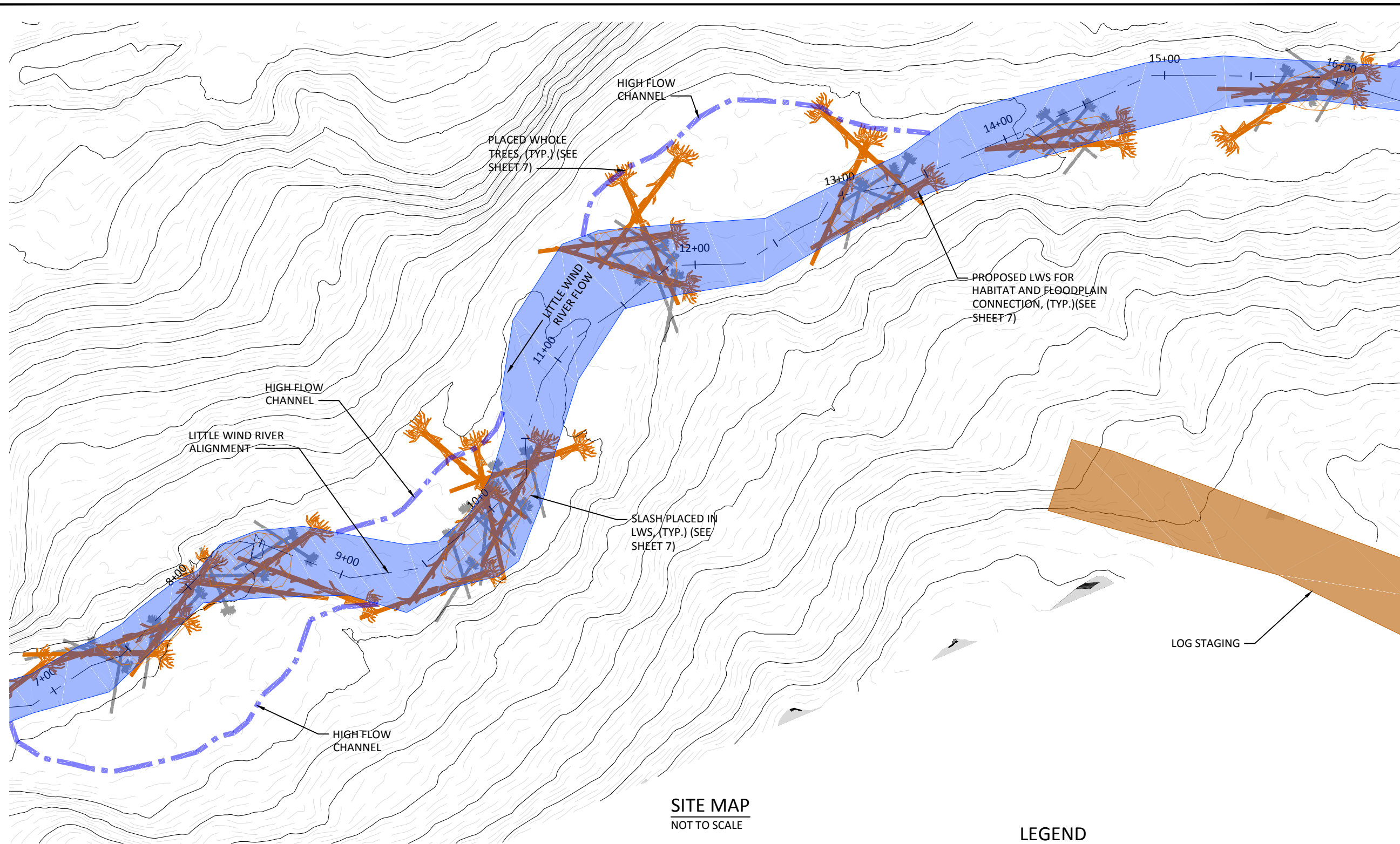
| | | |
|--------------------|--------------------|-------------------|
| RP DRAWN | BN, GJ DESIGNED | BN, GJ CHECKED |
| BN, GJ APPROVED | 12/06/16 DATE | 150256 PROJECT |

Lower Columbia Fish Recovery Board
Little Wind River, Phase 4 Enhancement Project
Preliminary Design






501 Portway Avenue, Suite 101
Hood River, OR 97031
541.386.9003
www.interfluve.com

PLAN VIEW PROPOSED
CONDITIONS



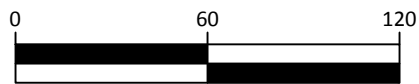
SITE MAP
NOT TO SCALE

LEGEND

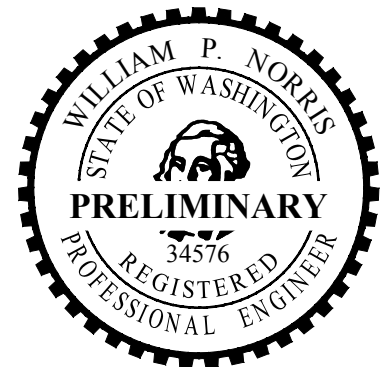
-  KEY PIECE WHOLE TREE
-  RECOVERED ALDER AND FIR
-  SLASH

NOTE:

1. RECOVERED ALDER AND FIR MAY COME FROM ON-SITE SOURCES. IF RECOVERED ON-SITE, THEY WILL BE MOVED WITH HAND CREWS. IF NOT RECOVERED ON-SITE, THEY WILL BE PLACED WITH HELICOPTER.
2. KEY PIECES TO BE PLACED OVER RECOVERED ALDER AND FIR BY HELICOPTER.
3. SLASH MAY BE PLACED BY HAND OR VIA HELICOPTER, DEPENDING ON SOURCING.



SCALE IN FEET



| NO. | BY | DATE | REVISION DESCRIPTION |
|-----|----|------|----------------------|
| | | | |
| | | | |
| | | | |

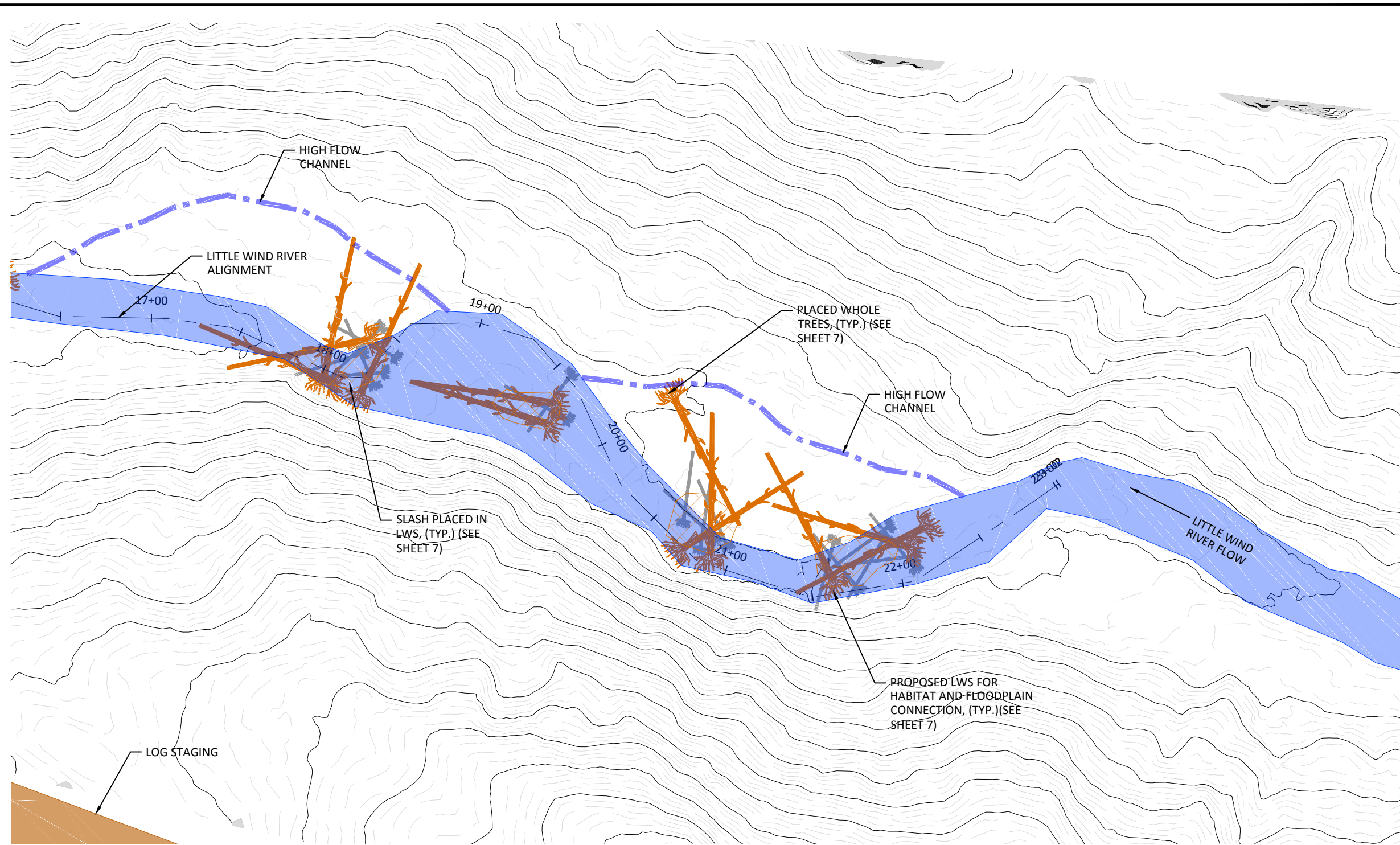
| | | |
|--------------------|--------------------|-------------------|
| RP DRAWN | BN, GJ DESIGNED | BN, GJ CHECKED |
| BN, GJ APPROVED | 12/06/16 DATE | 150256 PROJECT |

Lower Columbia Fish Recovery Board
Little Wind River, Phase 4 Enhancement Project
Preliminary Design






501 Portway Avenue, Suite 101
Hood River, OR 97031
541.386.9003
www.interfluve.com

PLAN VIEW PROPOSED
CONDITIONS

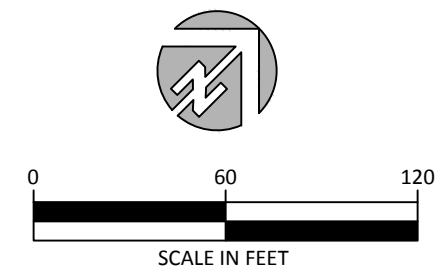


SITE MAP
NOT TO SCALE

LEGEND

-  KEY PIECE WHOLE TREE
-  RECOVERED ALDER AND FIR
-  SLASH

- NOTE:**
1. RECOVERED ALDER AND FIR MAY COME FROM ON-SITE SOURCES. IF RECOVERED ON-SITE, THEY WILL BE MOVED WITH HAND CREWS. IF NOT RECOVERED ON-SITE, THEY WILL BE PLACED WITH HELICOPTER.
 2. KEY PIECES TO BE PLACED OVER RECOVERED ALDER AND FIR BY HELICOPTER.
 3. SLASH MAY BE PLACED BY HAND OR VIA HELICOPTER, DEPENDING ON SOURCING.



| NO. | BY | DATE | REVISION DESCRIPTION |
|-----|----|------|----------------------|
| | | | |
| | | | |
| | | | |

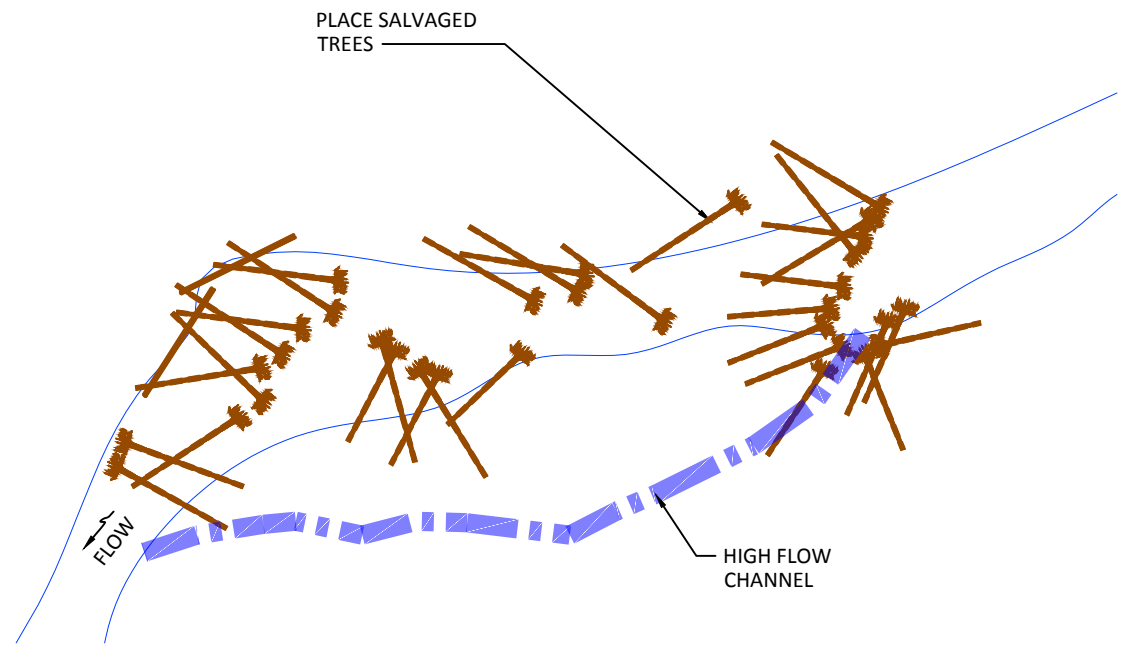
| | | |
|--------------------|--------------------|-------------------|
| RP DRAWN | BN, GJ DESIGNED | BN, GJ CHECKED |
| BN, GJ APPROVED | 12/06/16 DATE | 150256 PROJECT |

Lower Columbia Fish Recovery Board
Little Wind River, Phase 4 Enhancement Project
Preliminary Design

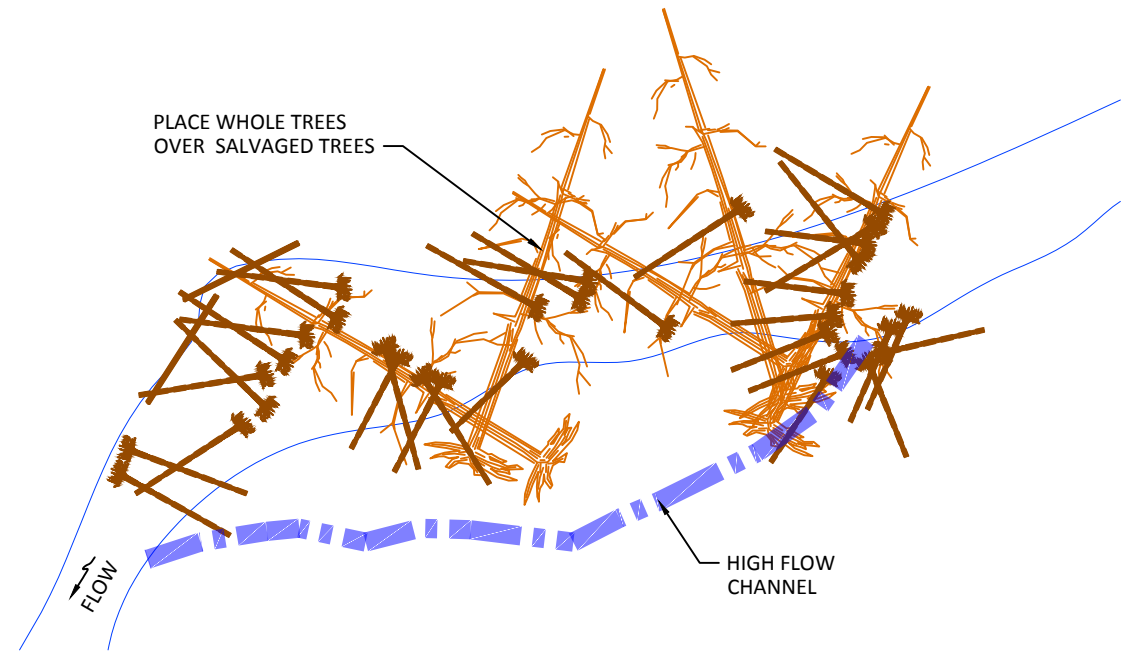


501 Portway Avenue, Suite 101
Hood River, OR 97031
541.386.9003
www.interfluve.com

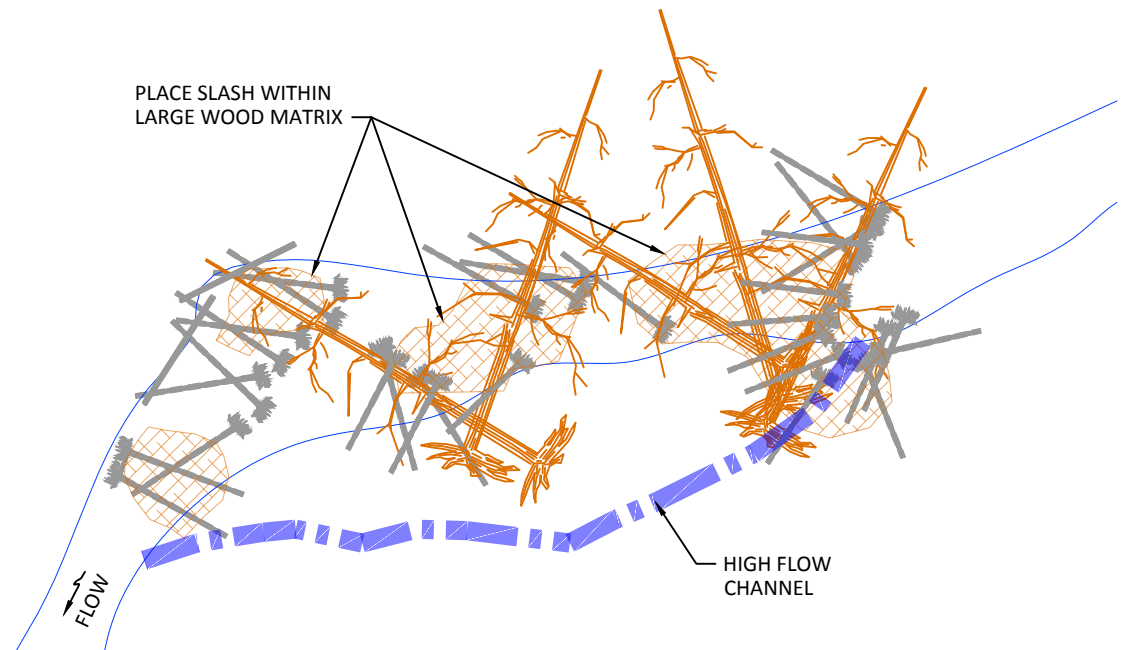
PLAN VIEW PROPOSED
CONDITIONS



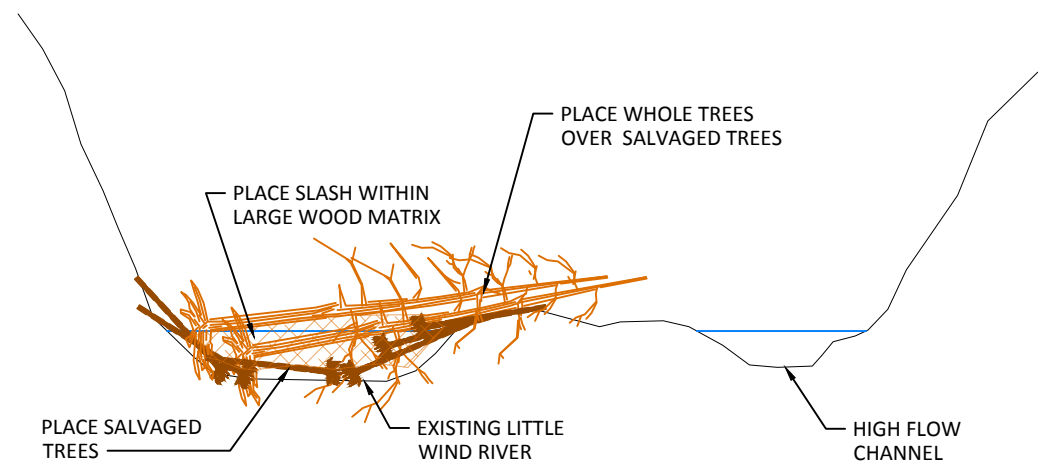
STEP 1 - PLACED SALVAGED ALDER AND FIR



STEP 2 - PLACING KEY PIECES OVER SALVAGED ALDER AND FIR



STEP 3 - PLACE SLASH



**TYPICAL CROSS-SECTION OF WOOD PLACEMENT
ACTIVATING HIGH FLOW CHANNELS**



| NO. | BY | DATE | REVISION DESCRIPTION |
|-----|----|------|----------------------|
| | | | |
| | | | |
| | | | |

| | | |
|--------------------|--------------------|-------------------|
| RP DRAWN | BN, GJ DESIGNED | BN, GJ CHECKED |
| BN, GJ APPROVED | 12/06/16 DATE | 150256 PROJECT |

Lower Columbia Fish Recovery Board
Little Wind River, Phase 4 Enhancement Project
Preliminary Design



501 Portway Avenue, Suite 101
Hood River, OR 97031
541.386.9003
www.interfluve.com

TYPICAL DETIALS