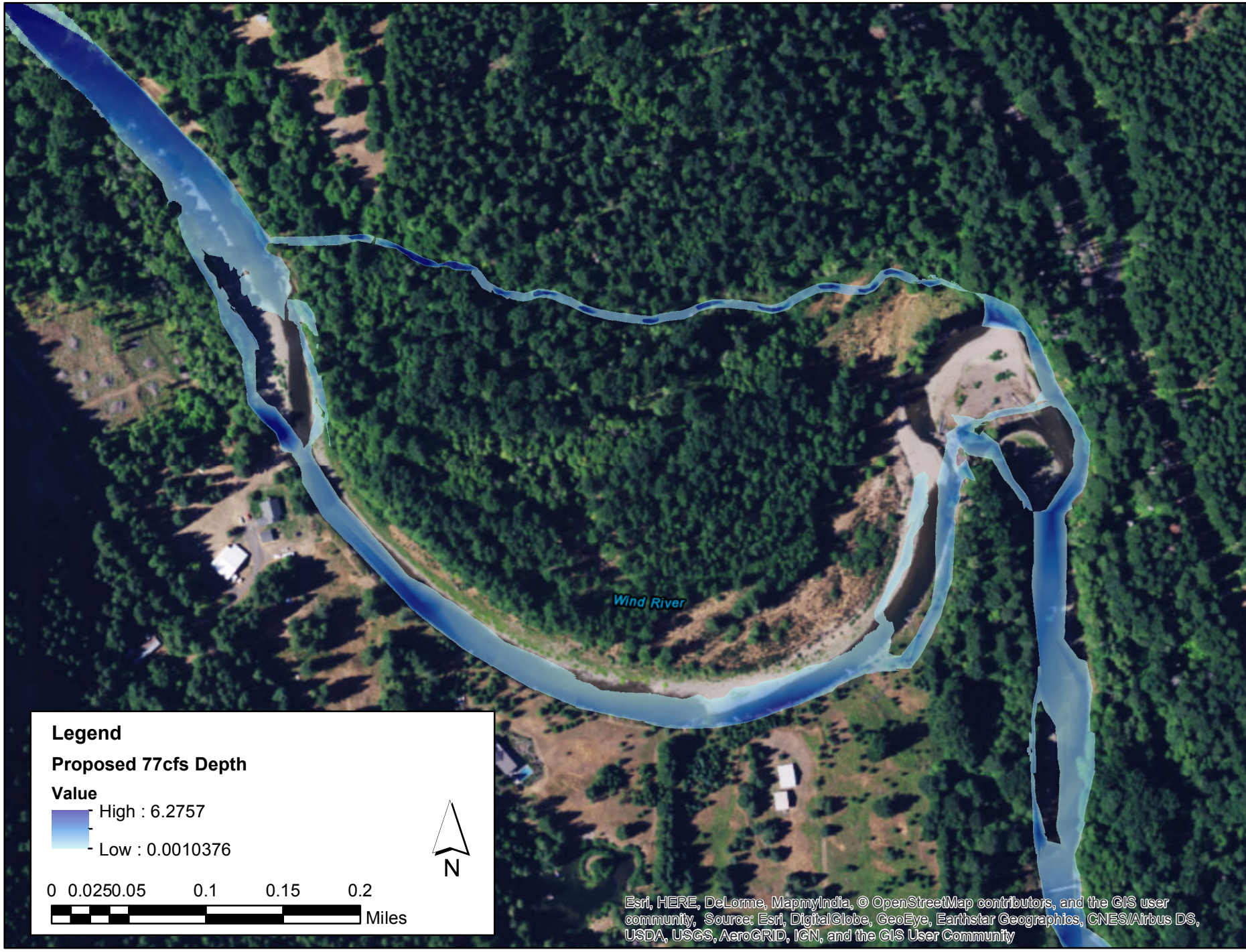


## Appendix B – Proposed condition hydraulic model output

---

Proposed condition hydraulic model output from the HEC-RAS 2D model. Depth values are in feet and velocity values are in feet per second.

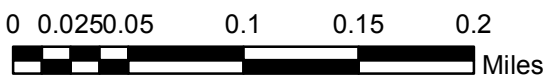


**Legend**

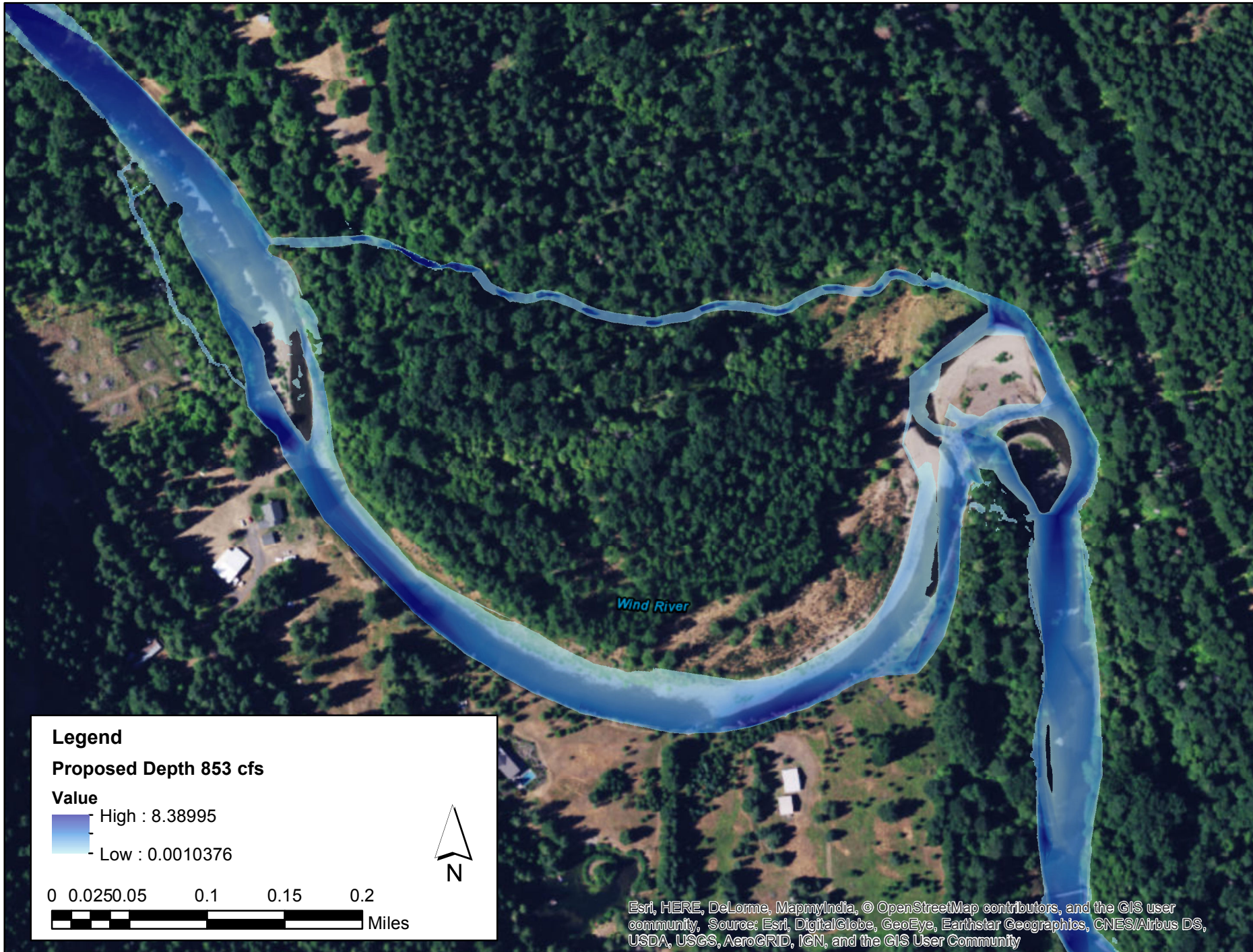
**Proposed 77cfs Depth**

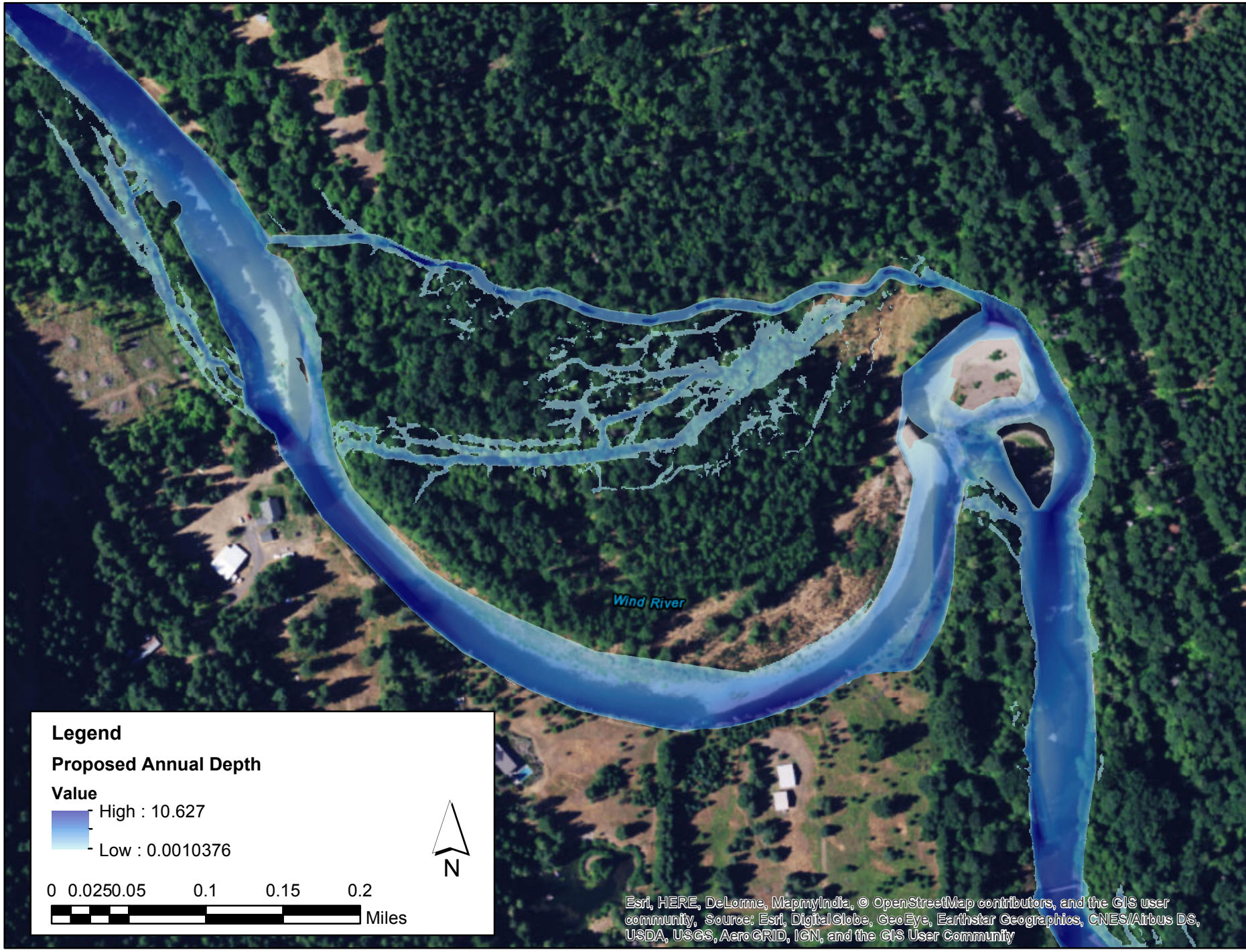
**Value**

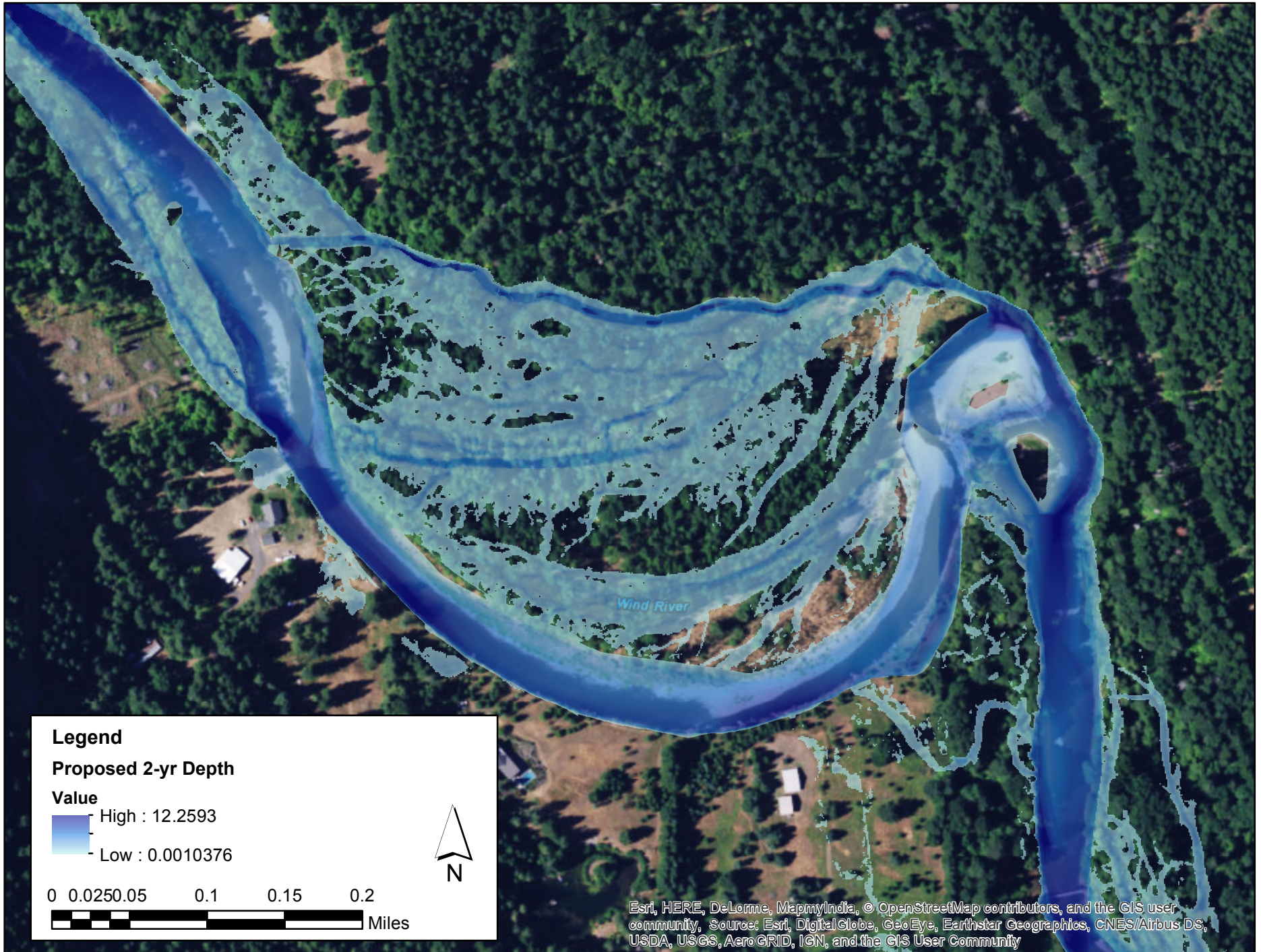
- High : 6.2757
- Low : 0.0010376



Esri, HERE, DeLorme, MapmyIndia, © OpenStreetMap contributors, and the GIS user community, Source: Esri, DigitalGlobe, GeoEye, Earthstar Geographics, CNES/Airbus DS, USDA, USGS, AeroGRID, IGN, and the GIS User Community







**Legend**

**Proposed 2-yr Depth**

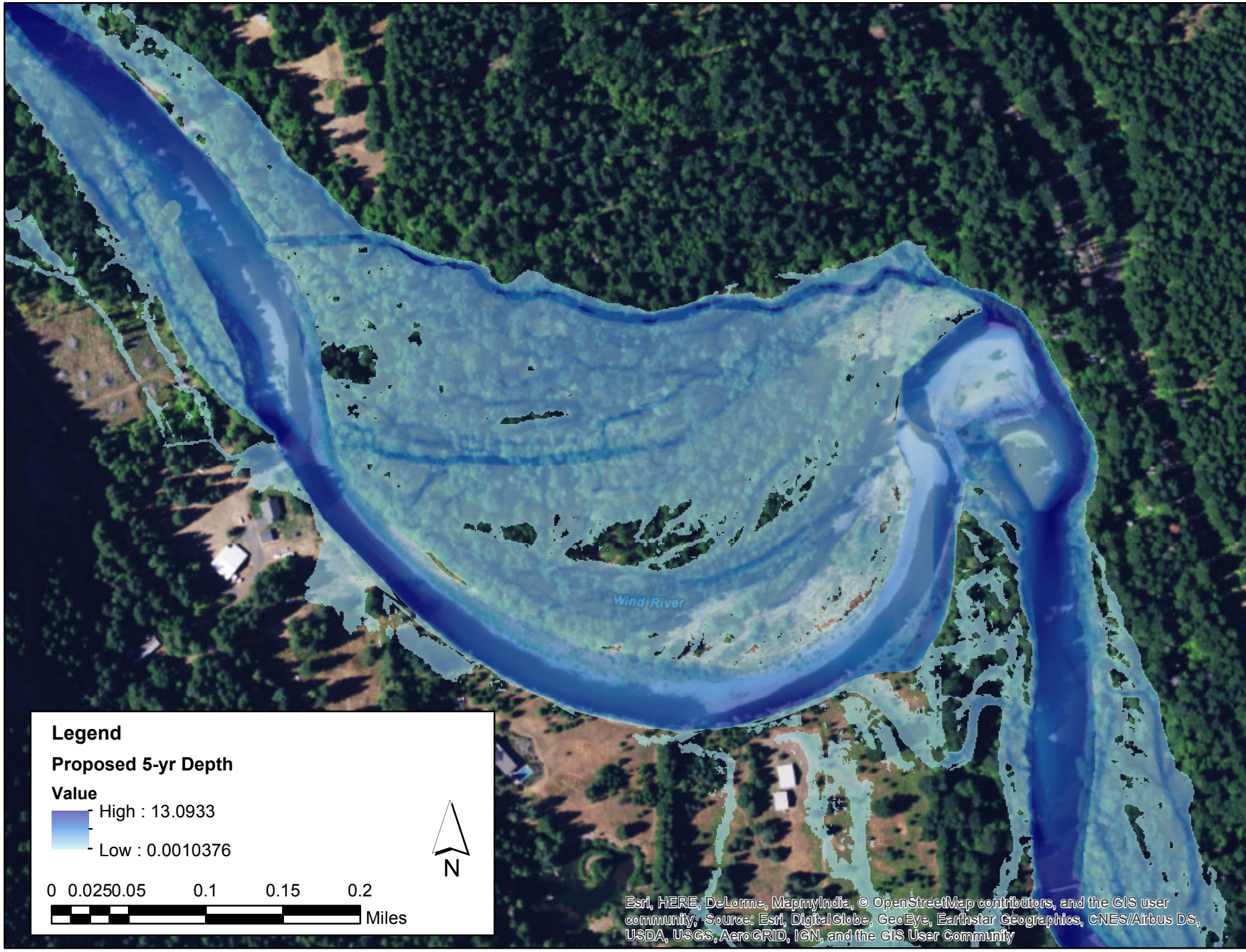
**Value**

High : 12.2593  
Low : 0.0010376

0 0.0250.05 0.1 0.15 0.2  
Miles



Esri, HERE, DeLorme, MapmyIndia, © OpenStreetMap contributors, and the GIS user community, Source: Esri, DigitalGlobe, GeoEye, Earthstar Geographics, CNES/Airbus DS, USDA, USGS, AeroGRID, IGN, and the GIS User Community



**Legend**

**Proposed 5-yr Depth**

**Value**

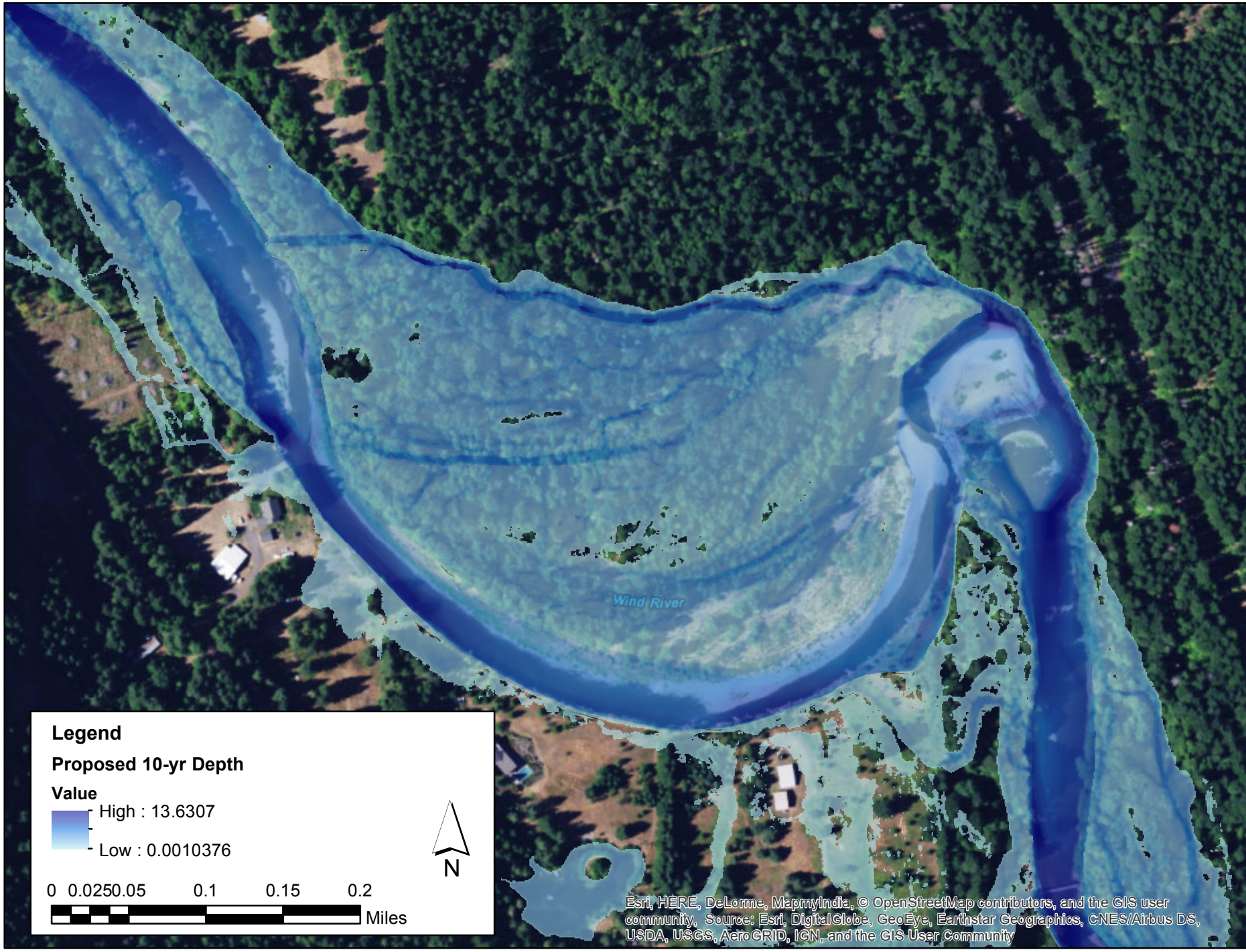
High : 13.0933

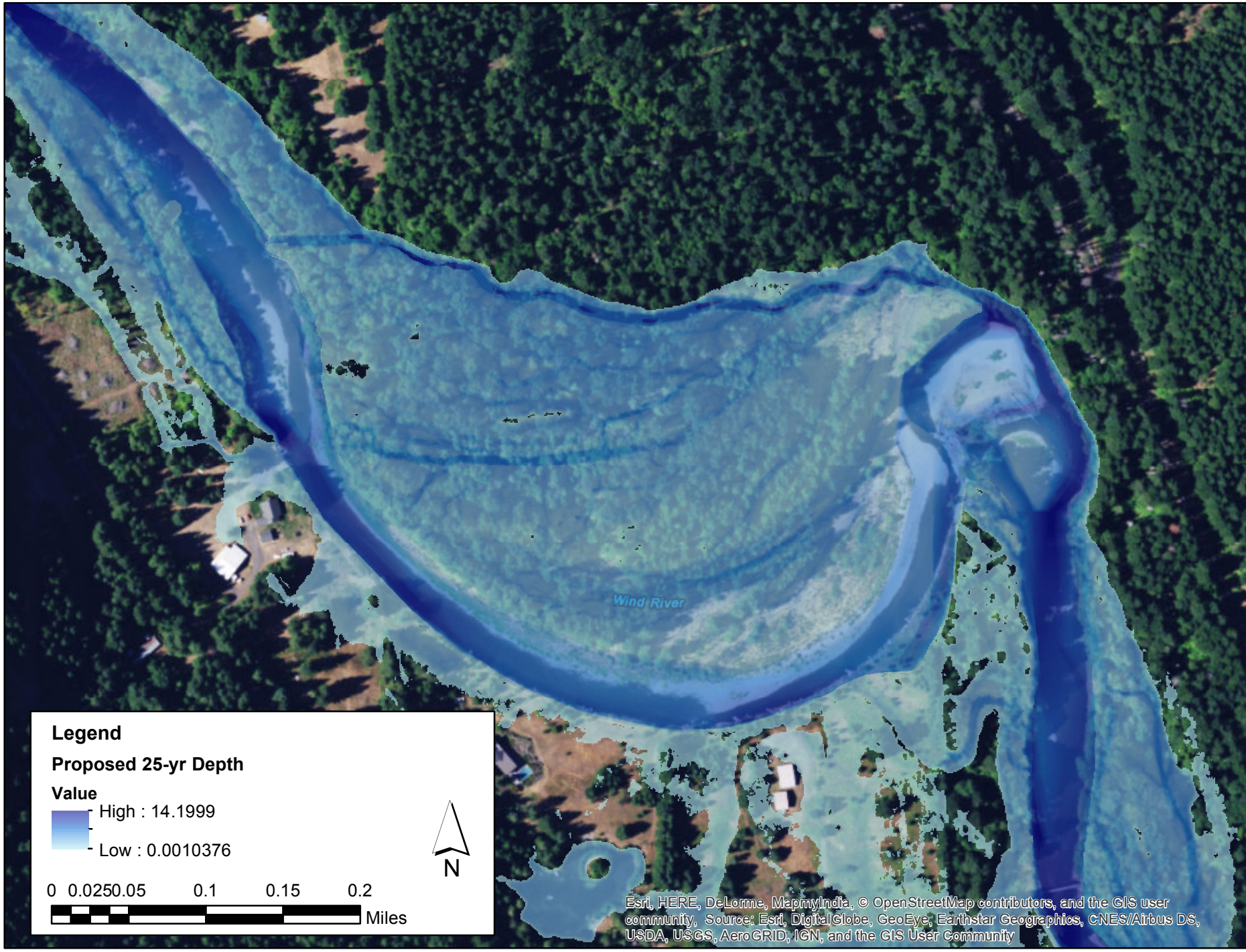
Low : 0.0010376

0 0.0250.05 0.1 0.15 0.2

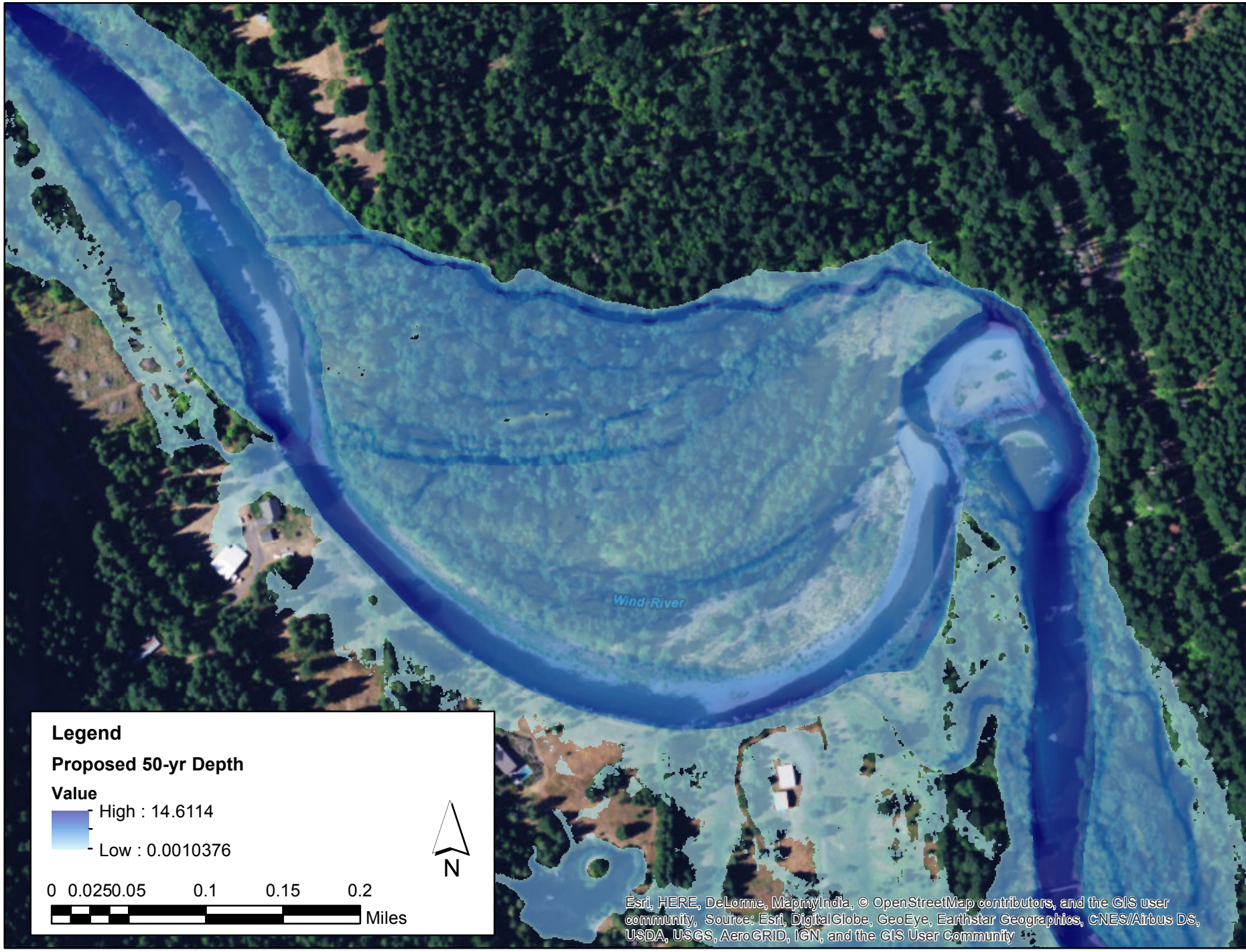
Miles

Esri, HERE, DeLorme, MapmyIndia, © OpenStreetMap contributors, and the GIS user community; Source: Esri, DigitalGlobe, GeoEye, Earthstar Geographics, CNES/Airbus DS, USDA, USGS, AeroGRID, IGN, and the GIS User Community









**Legend**

**Proposed 50-yr Depth**

**Value**

High : 14.6114

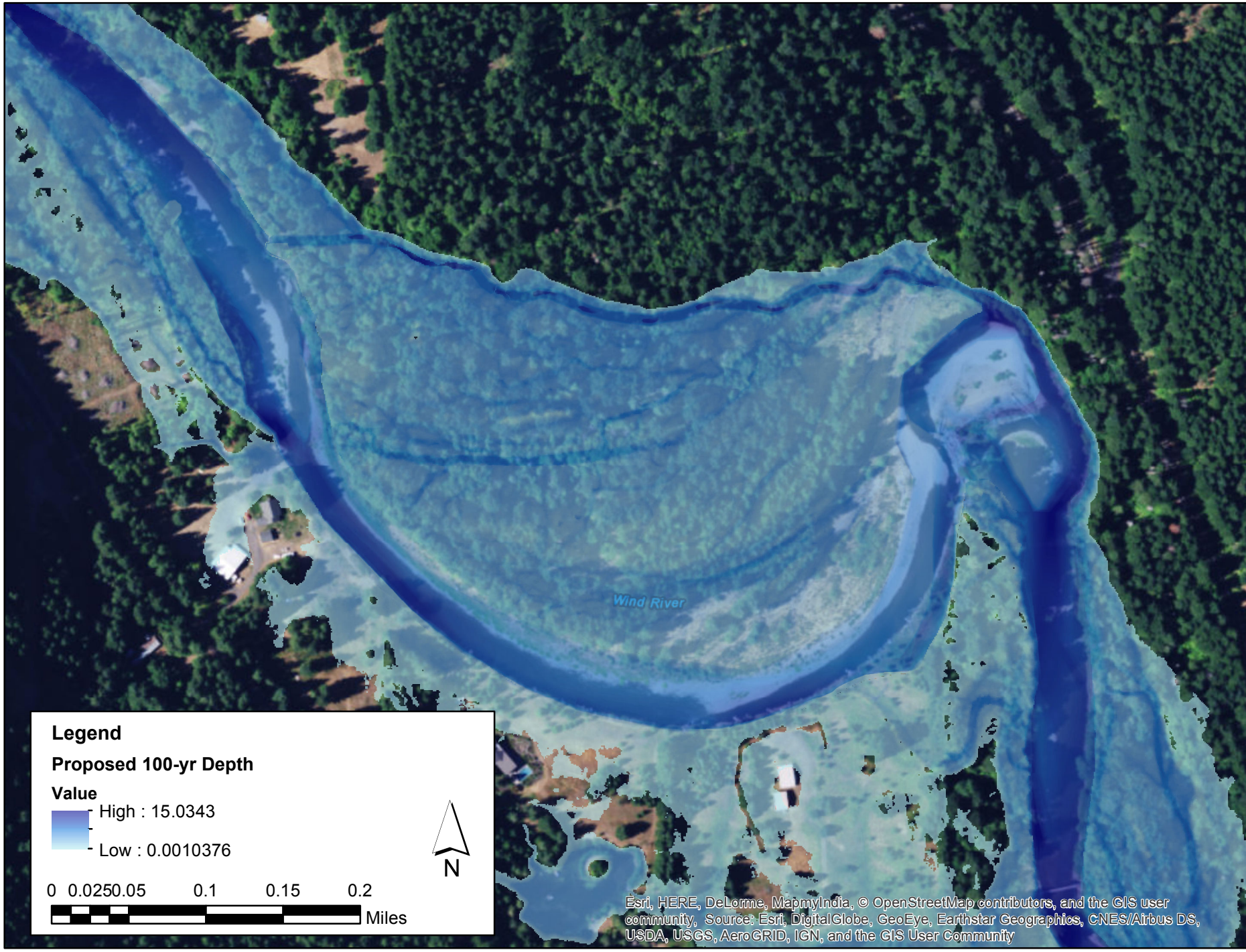
Low : 0.0010376

0 0.0250.05 0.1 0.15 0.2

Miles

N

Esri, HERE, DeLorme, MapmyIndia, © OpenStreetMap contributors, and the GIS user community, Source: Esri, DigitalGlobe, GeoEye, Earthstar Geographics, CNES/Airbus DS, USDA, USGS, AeroGRID, IGN, and the GIS User Community



**Legend**

**Proposed 100-yr Depth**


**Value**

High : 15.0343

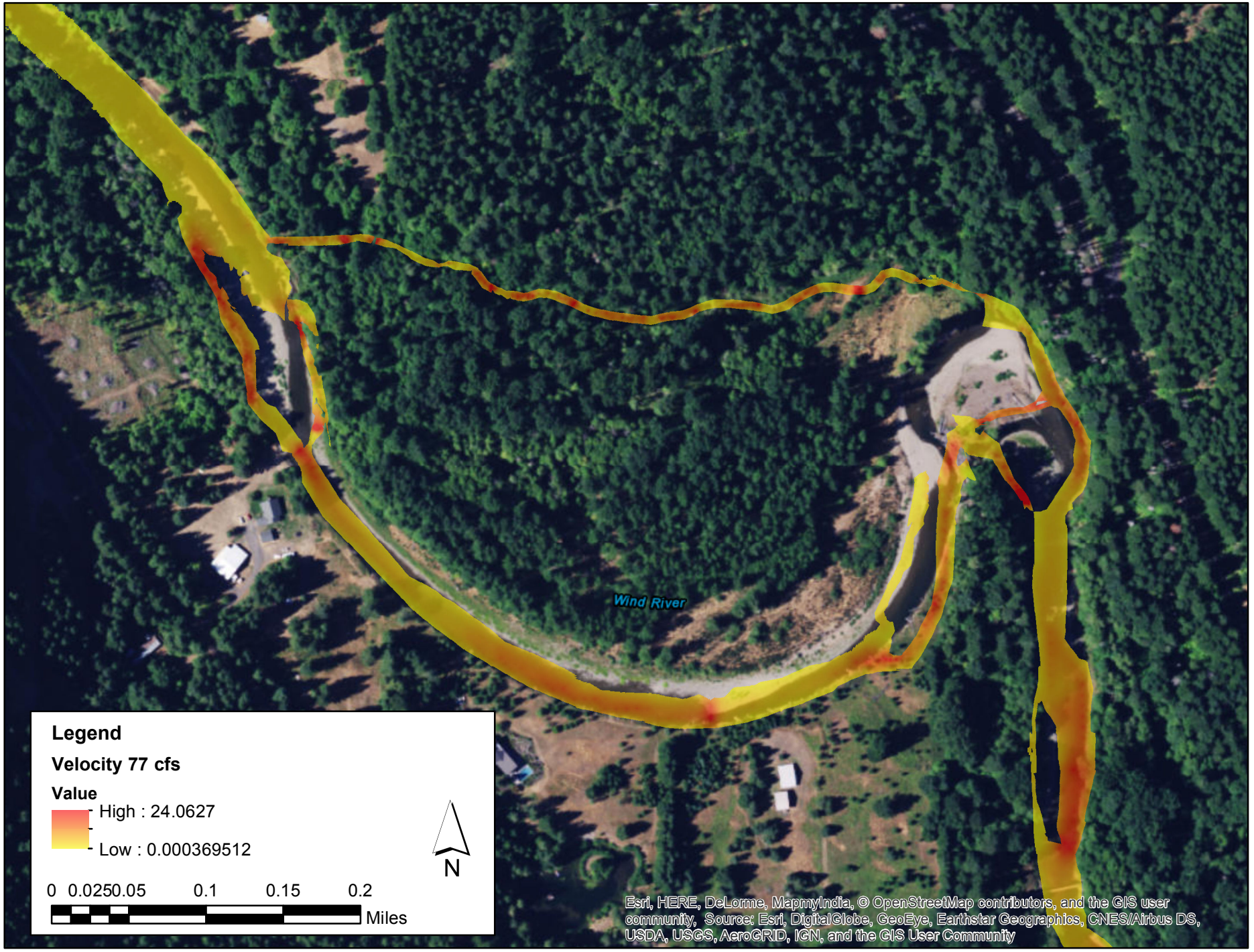
Low : 0.0010376

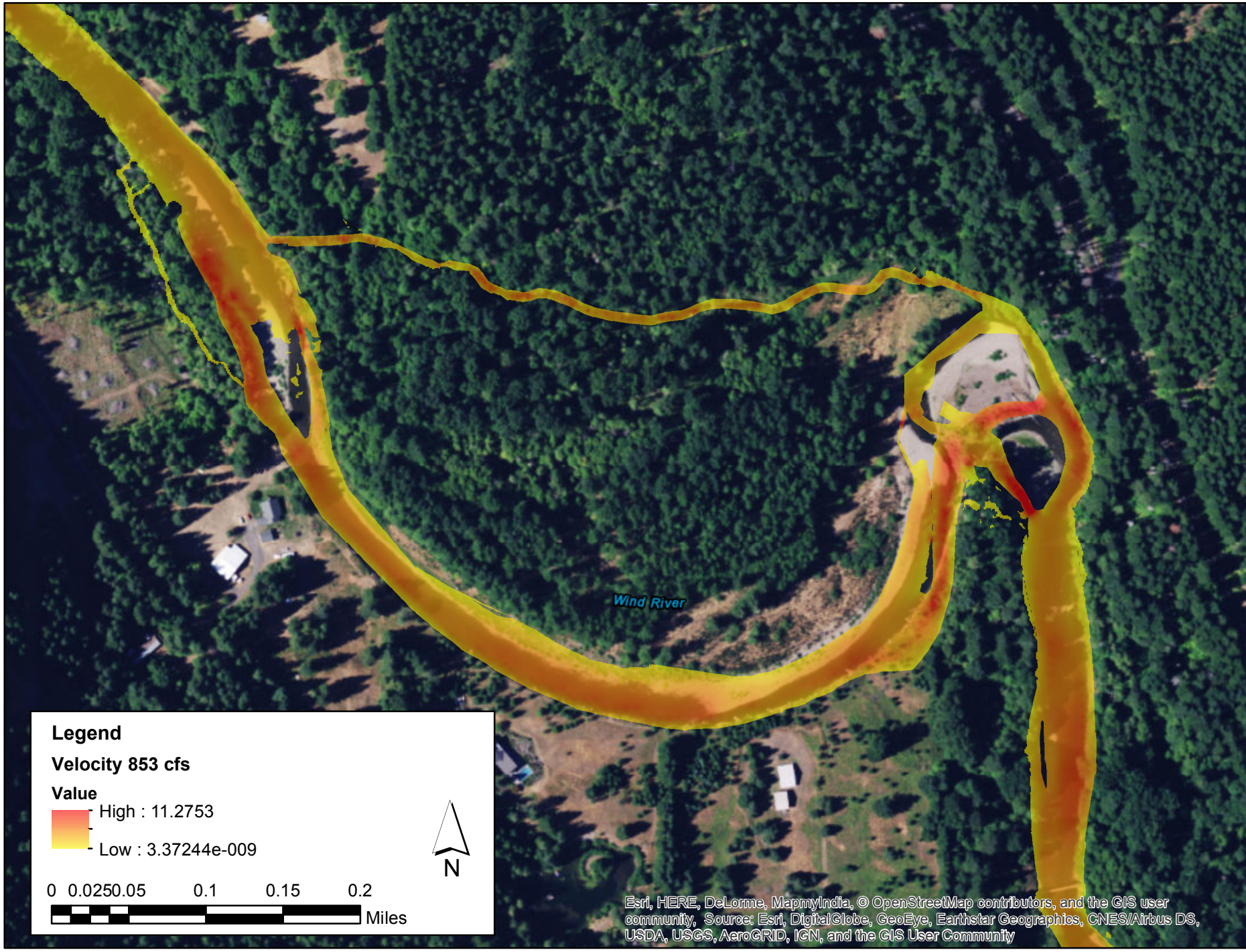
0 0.025 0.05 0.1 0.15 0.2

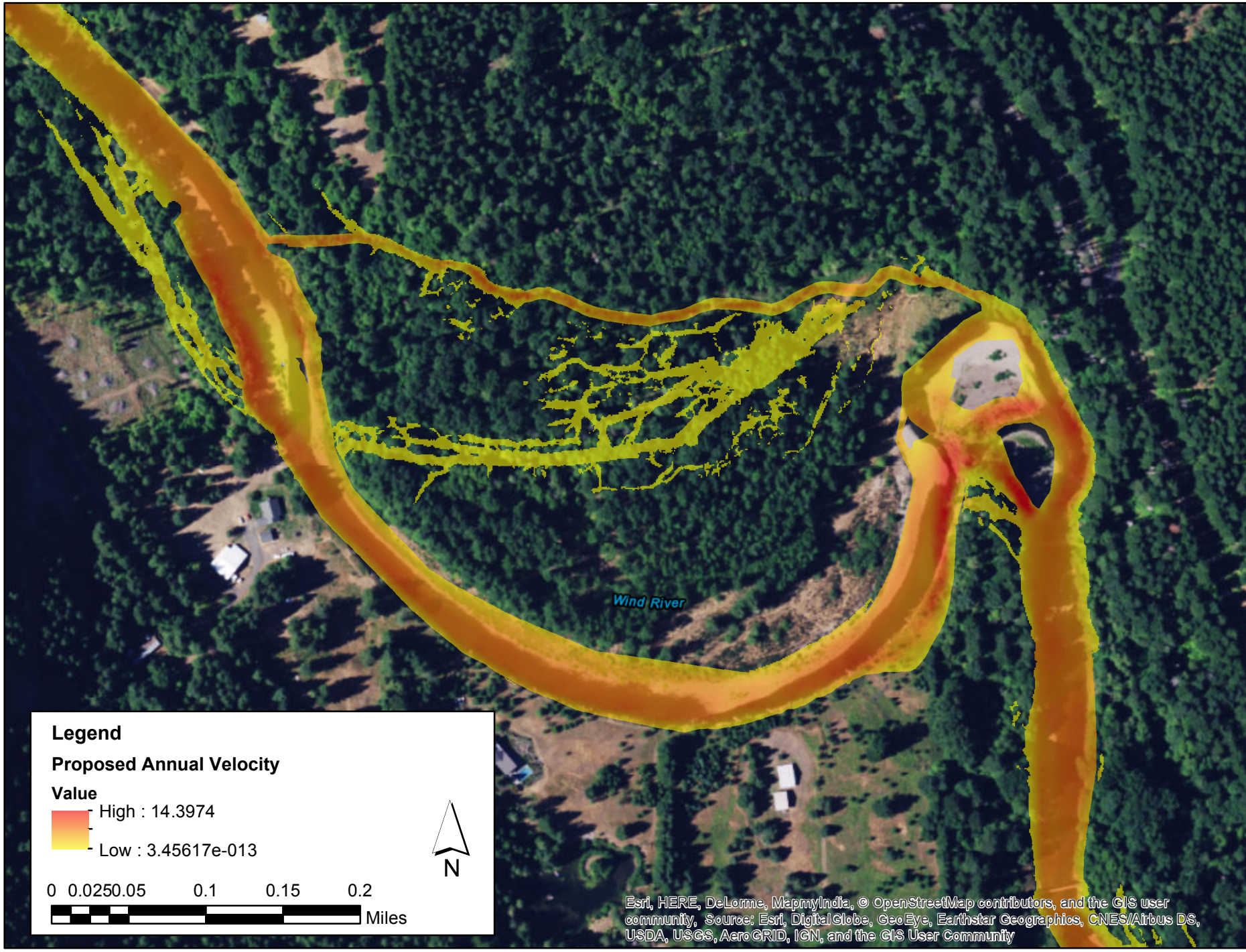
Miles



Esri, HERE, DeLorme, MapmyIndia, © OpenStreetMap contributors, and the GIS user community, Source: Esri, DigitalGlobe, GeoEye, Earthstar Geographics, CNES/Airbus DS, USDA, USGS, AeroGRID, IGN, and the GIS User Community








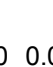
Wind River

**Legend**


**Proposed Annual Velocity**


**Value**

 High : 14.3974

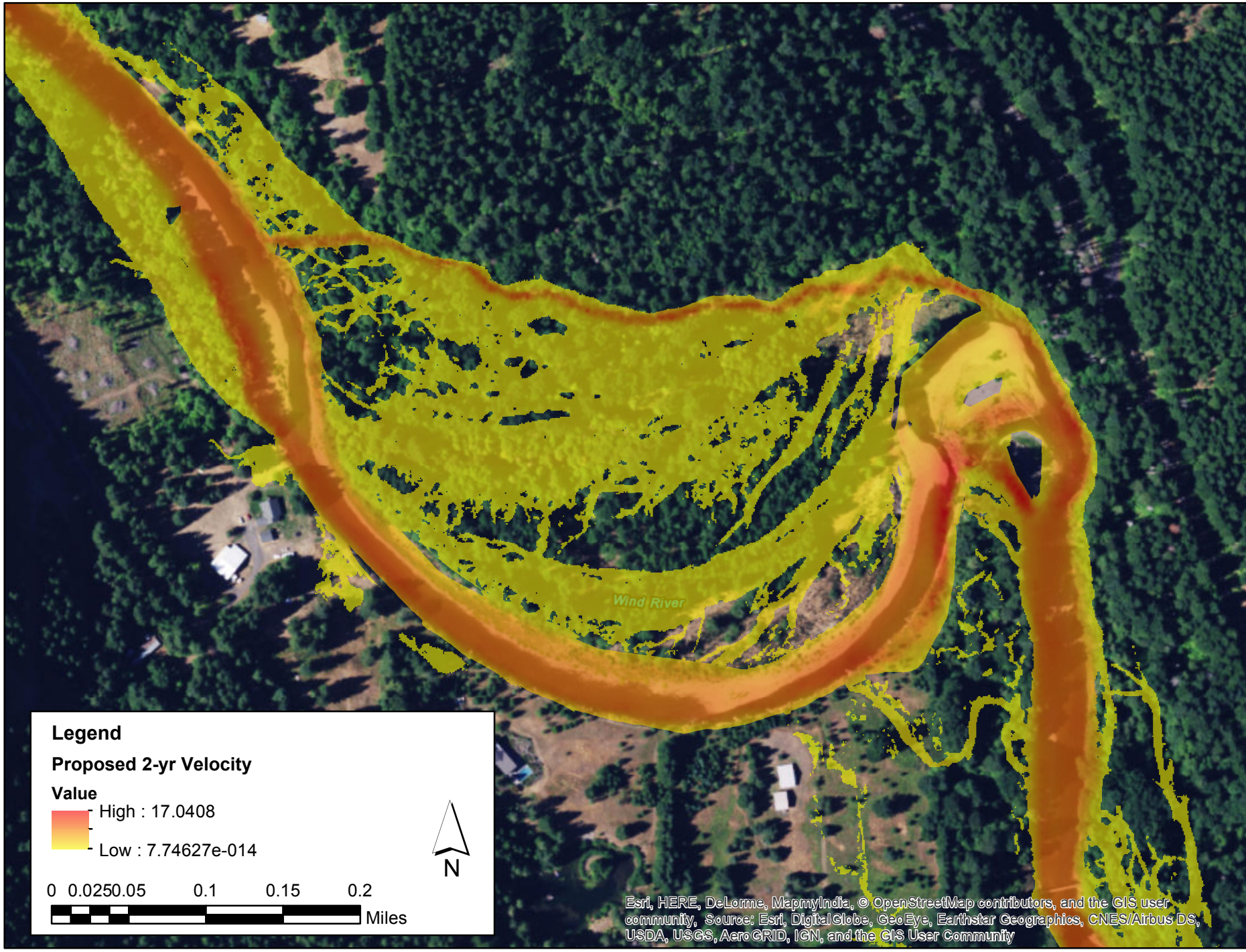
 Low : 3.45617e-013

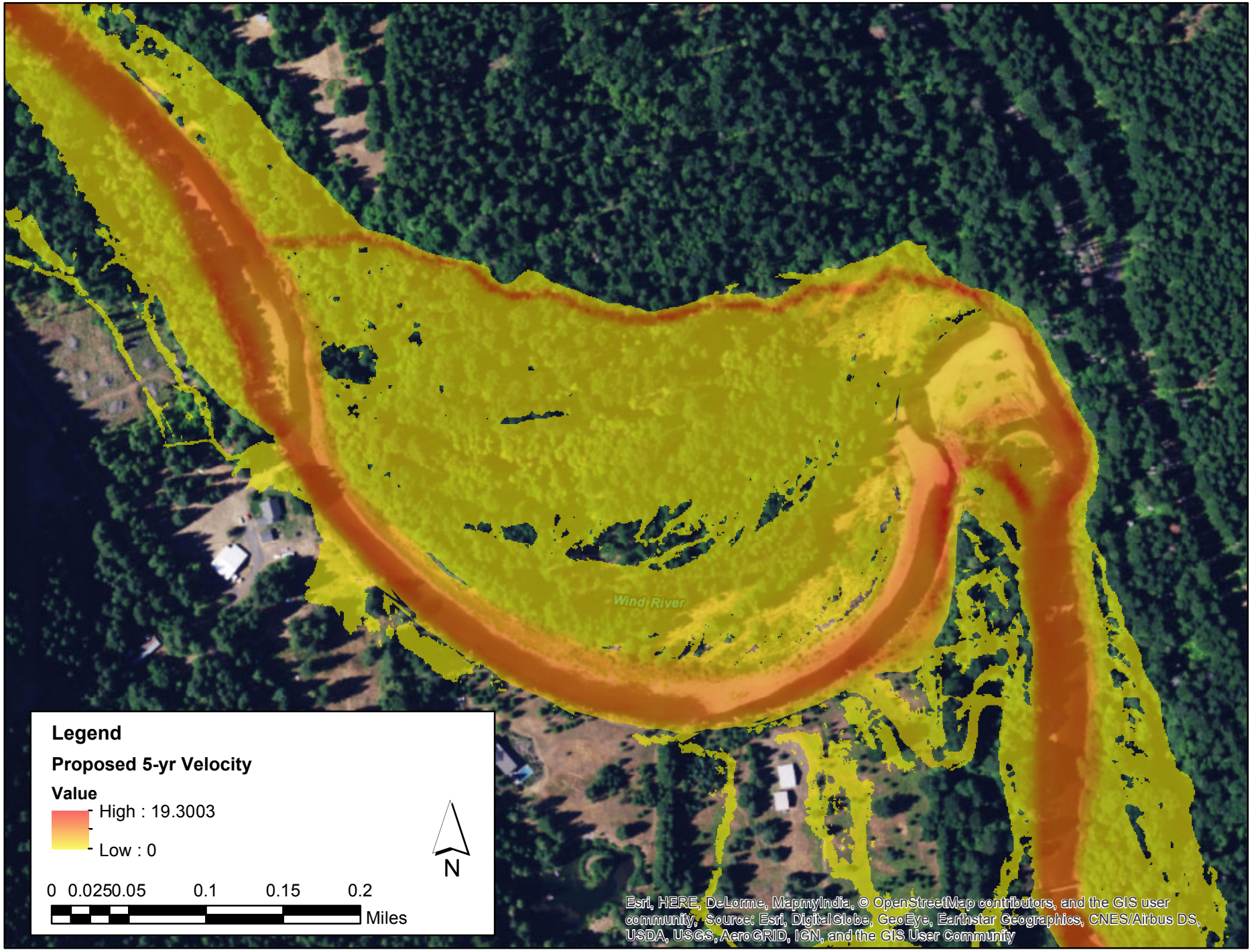
0 0.025 0.05 0.1 0.15 0.2

 Miles

 N

Esri, HERE, DeLorme, MapmyIndia, © OpenStreetMap contributors, and the GIS user community, Source: Esri, DigitalGlobe, GeoEye, Earthstar Geographics, CNES/Airbus DS, USDA, USGS, AeroGRID, IGN, and the GIS User Community

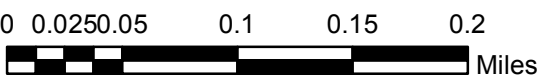
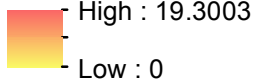




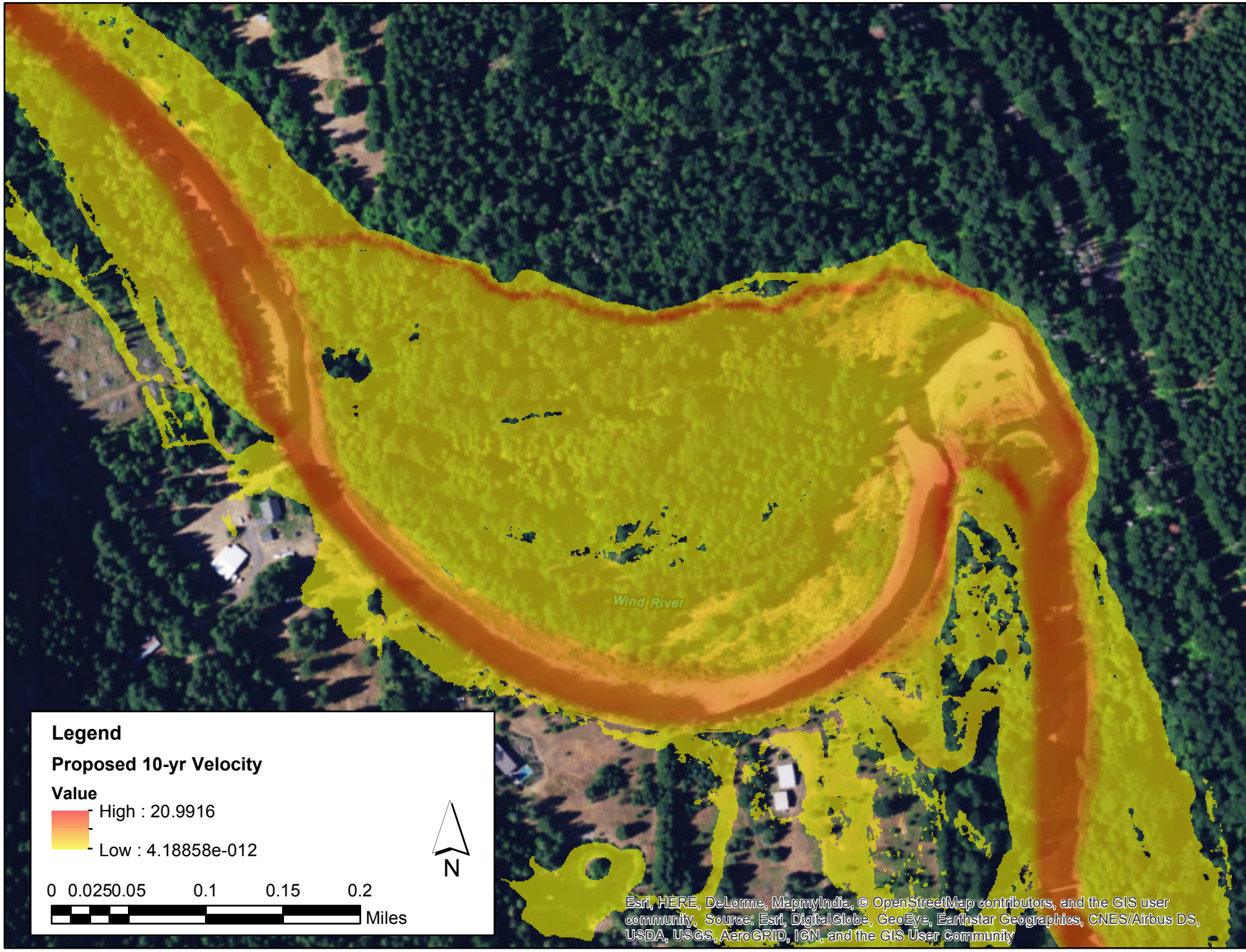
**Legend**

**Proposed 5-yr Velocity**

**Value**



Esri, HERE, DeLorme, MapmyIndia, © OpenStreetMap contributors, and the GIS user community, Source: Esri, DigitalGlobe, GeoEye, Earthstar Geographics, CNES/Airbus DS, USDA, USGS, AeroGRID, IGN, and the GIS User Community



**Legend**

**Proposed 10-yr Velocity**

**Value**

High : 20.9916

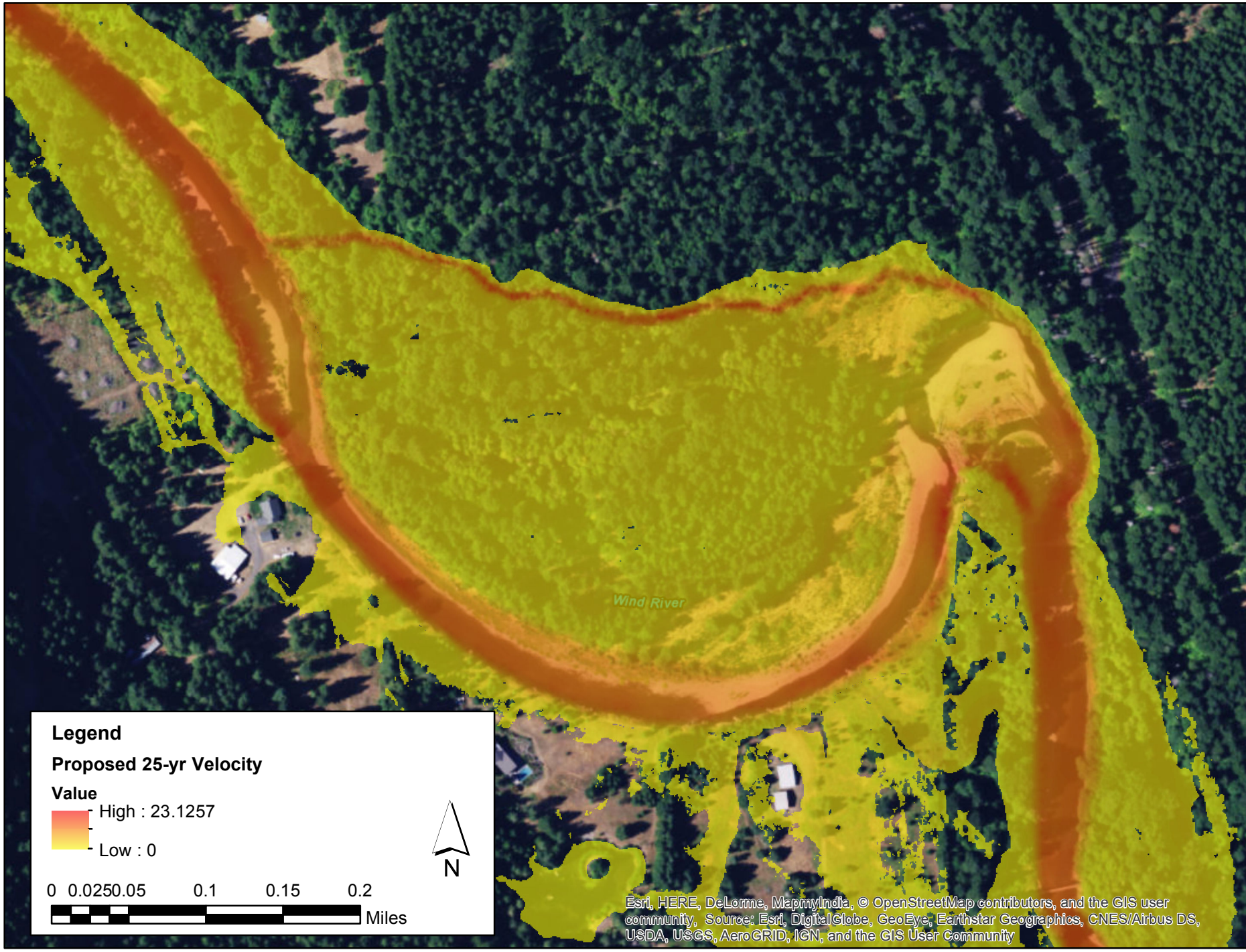
Low : 4.18858e-012

0 0.0250.05 0.1 0.15 0.2

Miles

Esri, HERE, DeLorme, MapmyIndia, © OpenStreetMap contributors, and the GIS user community, Source: Esri, DigitalGlobe, GeoEye, Earthstar Geographics, CNES/Airbus DS, USDA, USGS, AeroGRID, IGN, and the GIS User Community

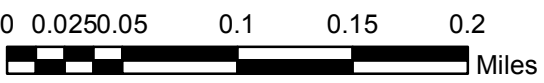
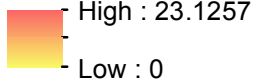




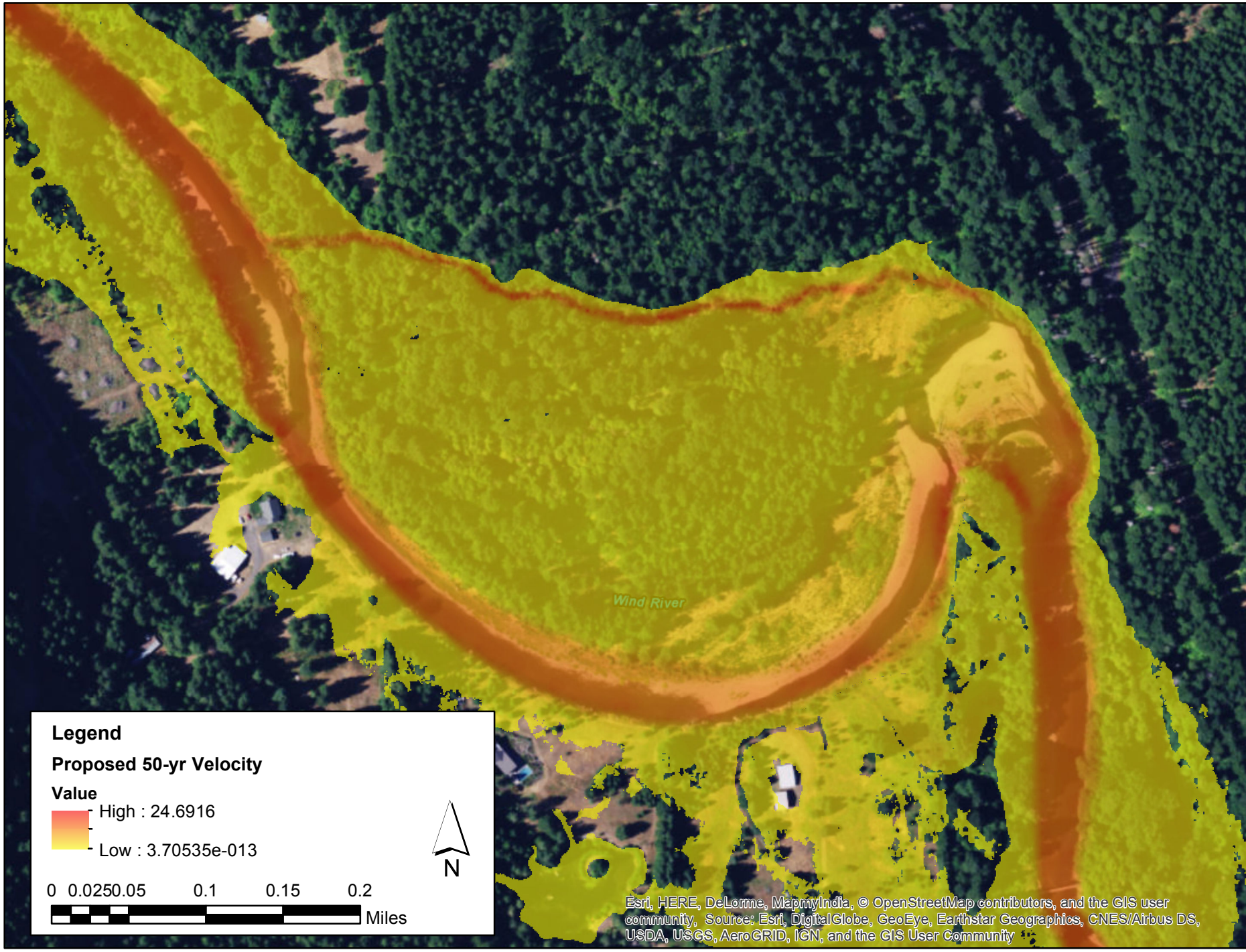
**Legend**

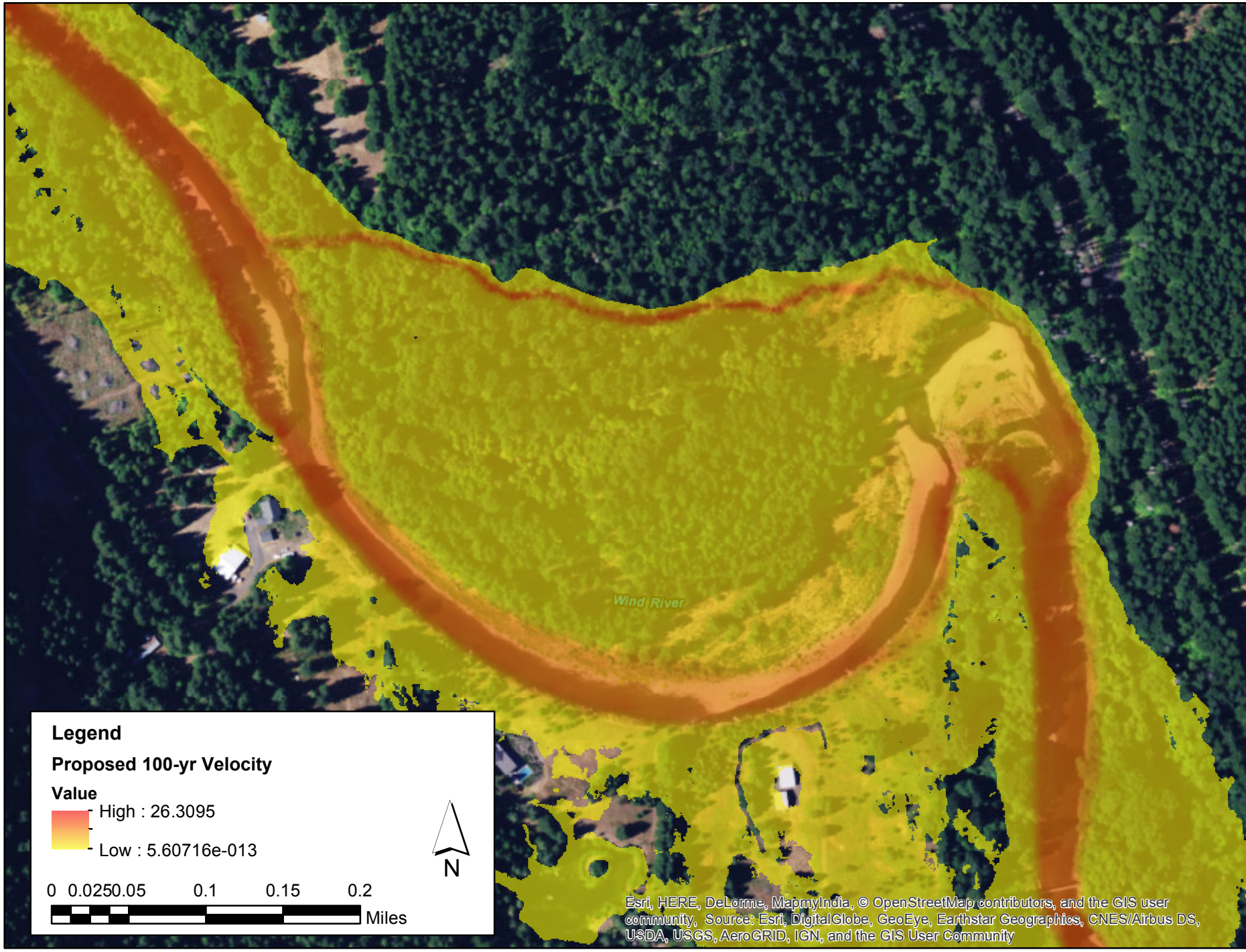
**Proposed 25-yr Velocity**

**Value**



Esri, HERE, DeLorme, MapmyIndia, © OpenStreetMap contributors, and the GIS user community, Source: Esri, DigitalGlobe, GeoEye, Earthstar Geographics, CNES/Airbus DS, USDA, USGS, AeroGRID, IGN, and the GIS User Community




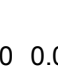


**Legend**


**Proposed 100-yr Velocity**


**Value**

 High : 26.3095

 Low : 5.60716e-013

0 0.025 0.05 0.1 0.15 0.2

 Miles

 N

Esri, HERE, DeLorme, MapmyIndia, © OpenStreetMap contributors, and the GIS user community, Source: Esri, DigitalGlobe, GeoEye, Earthstar Geographics, CNES/Airbus DS, USDA, USGS, AeroGRID, IGN, and the GIS User Community