

Lower Columbia Intensively Monitored Watershed

An update on preliminary results and applications



LCFRB Meeting

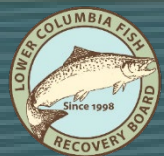
June 4, 2021



Monitoring is key to recovery



Inter-Fluve



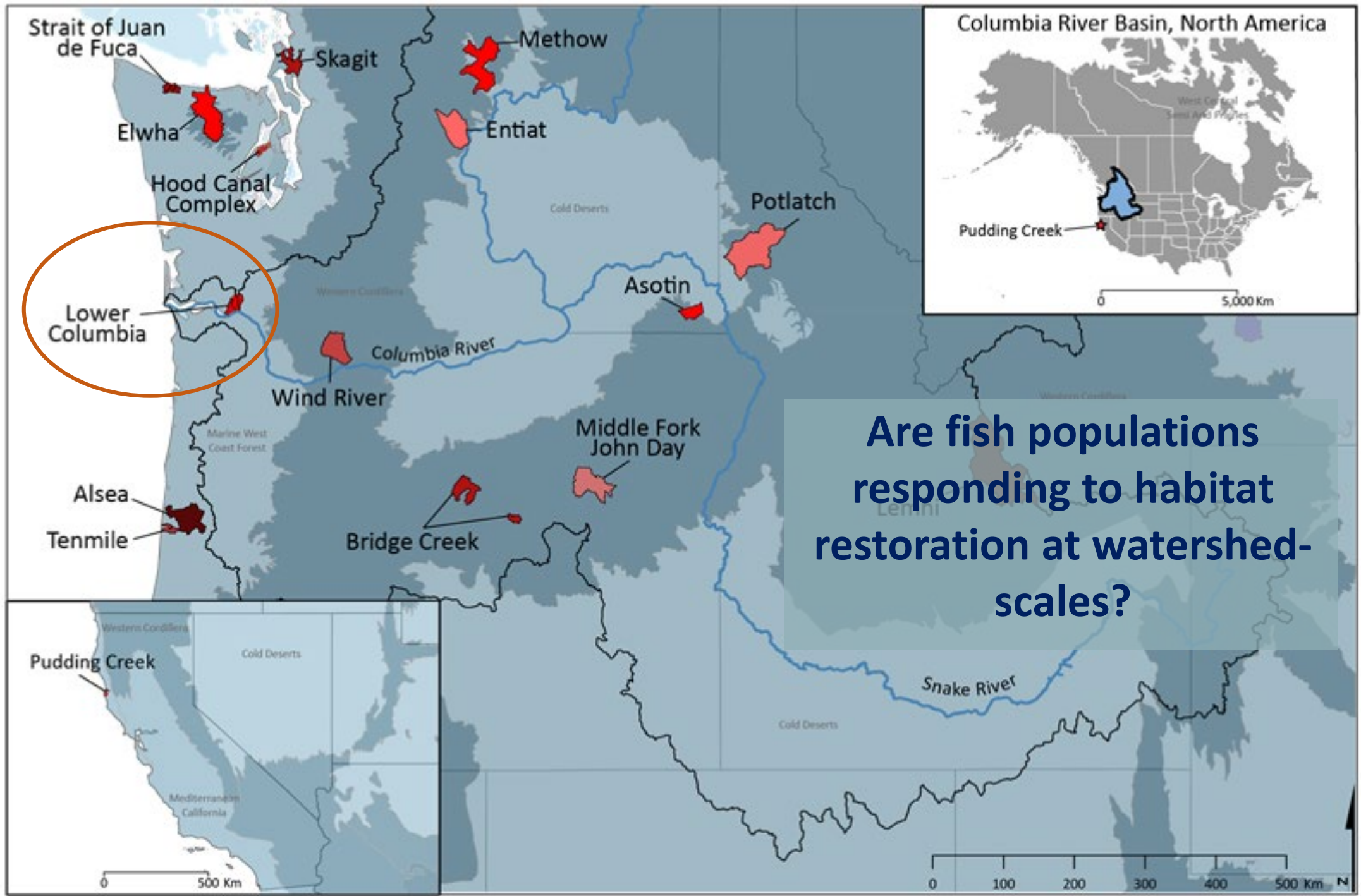
A photograph of a forest stream with fallen logs and dense green foliage. The stream flows through a lush, green forest with many trees and ferns. Several large, moss-covered logs are scattered across the stream bed and banks. The water is clear and appears to be flowing over rocks and debris.

How important is restoring habitat to salmon recovery?

How effective is habitat restoration?

WDFW





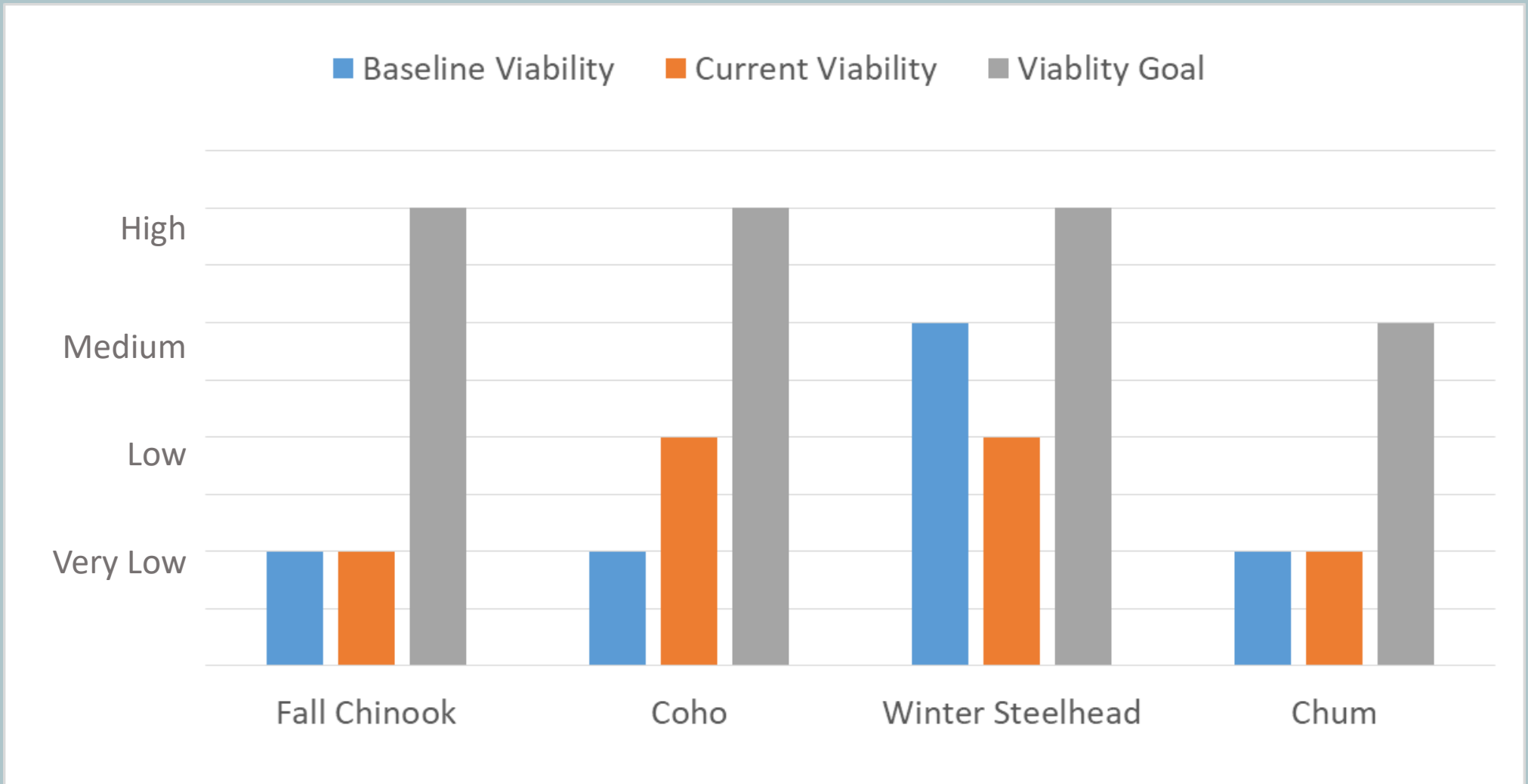
Are fish populations responding to habitat restoration at watershed-scales?





Supported Populations	Recovery Priority	Baseline Habitat Impacts
Fall Chinook	Primary	40%
Coho	Contributing	50%
Chum	Primary	90%
Winter Steelhead	Primary	40%





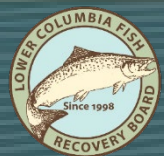


Adaptively manage the Recovery Plan

Inform restoration implementation

Identify lessons learned across IMW's

Understand effectiveness of habitat investments





WA Dept. of Fish & Wildlife

WA State Dept. of Ecology

Weyerhaeuser

Cowlitz Indian Tribe

Columbia Land Trust

Cowlitz Conservation District

Salmon Recovery Funding Board

Pacific Coastal Salmon Recovery
Fund

Pacific States Marine Fisheries
Commission



A collaborative program

